

1. Precautions

1. **Warning:** Prior to repair, disconnect the power cord from the circuit breaker.
2. **Use proper parts:** Use only exact replacement parts. (Also, we recommend replacing parts rather than repairing them.)
3. **Use the proper tools:** Use the proper tools and test equipment, and know how to use them. Using defective tools or test equipment may cause problems later-intermittent contact, for example.
4. **Power Cord:** Prior to repair, check the power cord and replace it if necessary.
5. **Avoid using an extension cord, and avoid tapping into a power cord.** This practice may result in malfunction or fire.
6. **After completing repairs and reassembly, check the insulation resistance.** Procedure: Prior to applying power, measure the resistance between the power cord and the ground terminal. The resistance must be greater than 30 megohms.
7. **Make sure that the grounds are adequate.**
8. **Make sure that the installation conditions are satisfactory.** Relocate the unit if necessary.
9. **Keep children away from the unit while it is being repaired.**
10. **Be sure to clean the unit and its surrounding area.**
11. **Be sure that the installed conditions are satisfactory and correct according to the specifications.**

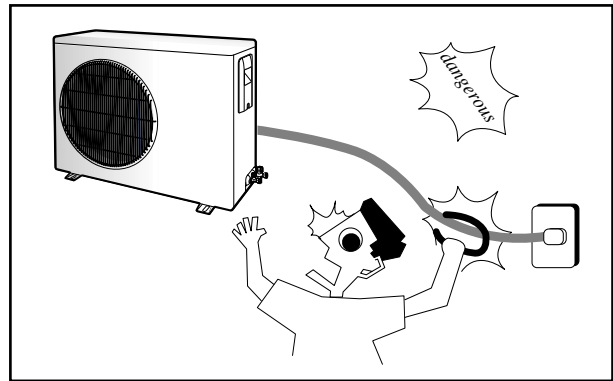


Fig. 1-1 Avoid Dangerous Contact

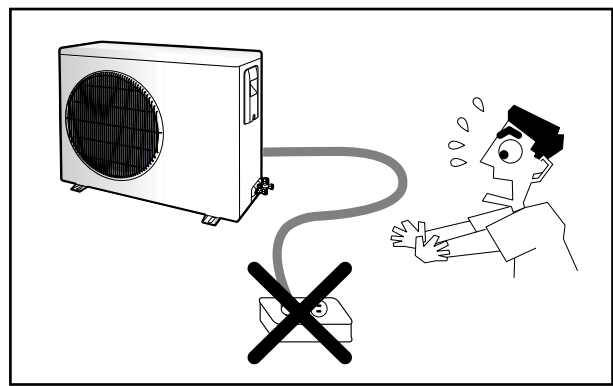


Fig. 1-2 No Tapping and No Extension Cords

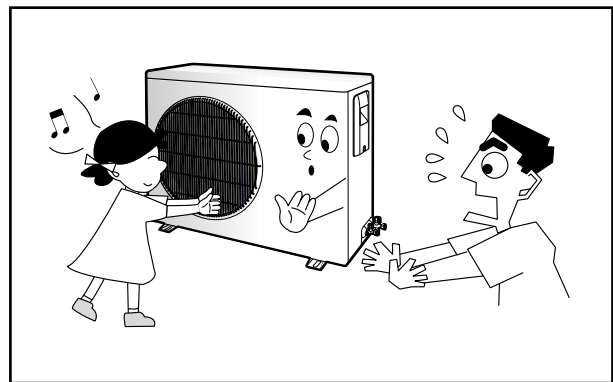


Fig. 1-3 No Kids Nearby!

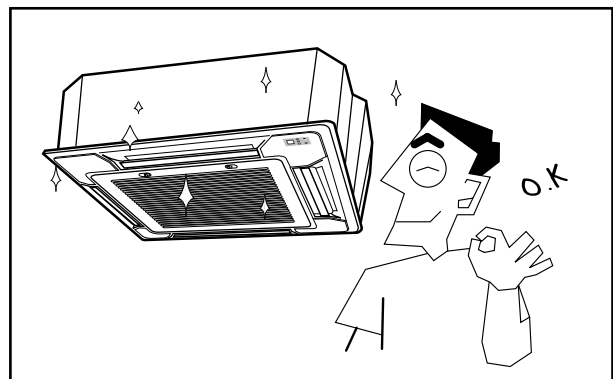


Fig. 1-4 Clean the Unit

MEMO