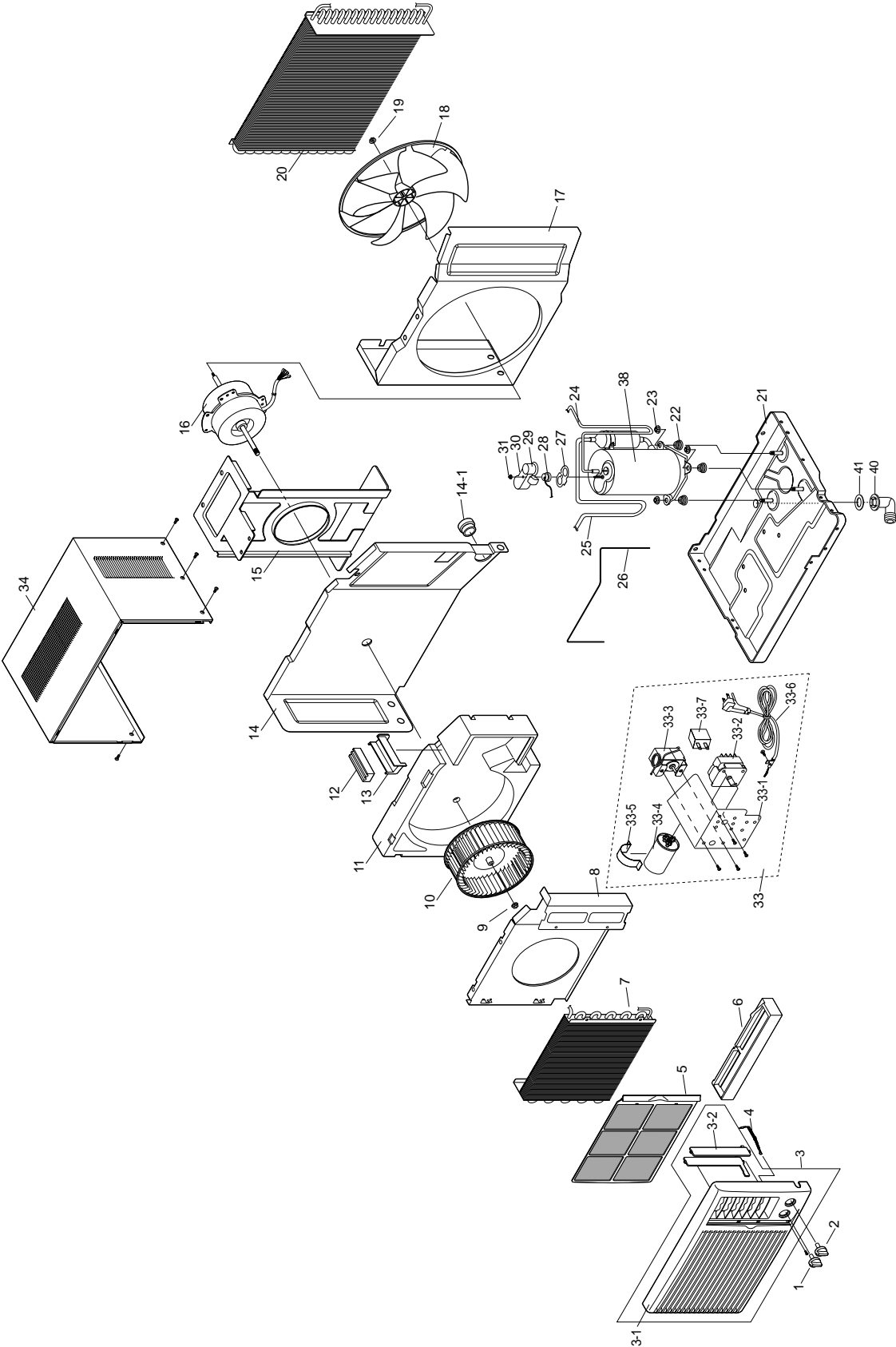


6. Exploded View and Parts List



Exploded View and Parts List

Part List

| No | Description | Code No. | Specification | QTY | | | |
|------|------------------------|-------------|------------------------------|-----------|-----------|-----------|-----------|
| | | | | AW05F05AD | AW05F05BB | AW05F05DA | AW05F05EB |
| 1 | KNOB-THERMO | DB64-00047A | ABS,-,AW05B05A,OK-PJT | 1 | 1 | 1 | 1 |
| 2 | KNOB-SELECTOR | DB64-00047B | ABS,-,AW05B05A,OK-PJT | 1 | 1 | 1 | 1 |
| 3 | ASSY-PANEL-FRONT | DB92-00032A | OK-P/J,SEA,SC-9444 | 1 | 1 | 1 | 1 |
| 3-1 | GRILLE-FRONT | DB64-00043A | HIPS,T2,-,AW05B05A,STA | 1 | 1 | 1 | 1 |
| 3-2 | BLADE-V | DB66-00023A | PP,T2,-,AW05B05A | 1 | 1 | 1 | 1 |
| 4 | LEVER-DAMPER | DB66-00024A | ABS,T2,-,AW05B05A OK-P | 1 | 1 | 1 | 1 |
| 5 | GUARD-AIR FILTER | DB63-00026A | ABS,T2,-,OK-PJT | 1 | 1 | 1 | 1 |
| 6 | TRAY-DRAIN | DB63-00027A | EPS,-,-,OK-PJT | 1 | 1 | 1 | 1 |
| 7 | ASSY EVAP | DB96-00548A | AW0510,SEA | 1 | 1 | 1 | 1 |
| 8 | ASSY-PLATE EVAP CASING | DB90-00274A | AW0510C/XXA, | 1 | 1 | 1 | 1 |
| 9 | NUT-FLANGE | DB60-30004A | 2C M6 SM20C NTR | 1 | 1 | 1 | 1 |
| 10 | BLOWER | DB67-00013A | ABS,-,OK-PJT | 1 | 1 | 1 | 1 |
| 11 | CASE-EVAP | DB61-00083A | EPS,-,-,-,AW05B05A,OK-PJT | 1 | 1 | 1 | 1 |
| 12 | RUBBER-PIPE | DB73-00031A | NR,-,BLK,OK-P/J | 1 | 1 | 1 | 1 |
| 13 | COVER-PIPE | DB63-00031A | PP,-,-,-,AW05B05A OK-PJT | 1 | 1 | 1 | 1 |
| 14 | ASSY PARTITION | DB94-00201A | OK-PJT,SBS | 1 | 1 | 1 | 1 |
| 14-1 | COVER-PARTITION | DB63-00089A | ABS,T1.5,BLK,-,OK-P | 1 | 1 | 1 | 1 |
| 15 | MOUNT-MOTOR | DB61-00084A | SGCC-M,T1.0,-,AW05B05A, | 1 | 1 | 1 | 1 |
| 16 | MOTOR FAN | DB31-00035E | YGN50-6,-,0.43/0.40/0.38A | 1 | - | - | - |
| | | DB31-00035B | YGN50-6A,OK-PJT,-,-,-,8 | - | 1 | - | - |
| | | DB31-00035L | YGN50-6L,AW05F05DA,-,-,-, | - | - | 1 | - |
| | | DB31-00035C | YGN50-6B,OK-PJT,-,-,-,8 | - | - | - | 1 |
| 17 | CASE-COND | DB61-00085A | SGCC-M,-,T0.45,-,AW05B05A | 1 | 1 | 1 | 1 |
| 18 | FAN-PROPELLER | DB67-00014A | ABS,290,OK-PJT | 1 | 1 | 1 | 1 |
| 19 | NUT-FLANGE | DB60-30020A | -,-,M6,-,FEFZY,LF | 1 | 1 | 1 | 1 |
| 20 | ASSY-COND | DB96-00210A | AW05B05A,SEA,1-PASS | 1 | 1 | 1 | - |
| | | DB96-01302A | AW05JC5AA/GEA,COST D | - | - | - | 1 |
| 21 | ASSY-BASE | DB90-00431B | OK-P/J,- | 1 | 1 | 1 | 1 |
| 22 | GROMMET-ISOLATOR | DB73-00016A | EPDM,-,BLK,OK-PJT | 1 | 1 | 1 | 1 |
| 23 | NUT-WASHER | DB60-30028A | HEX 2C M8 ZPC | 1 | 1 | 1 | 1 |
| 24 | TUBE DISCHARGE | DB62-00445B | -,-,-,OK-P/J | 1 | - | - | 1 |
| | | DB62-00445D | OK-PRO,-,-,CHINA | - | 1 | 1 | - |
| 25 | TUBE SUCTION | DB62-00296A | C1220T-0,OD9.5,T0.8,-, | 1 | 1 | 1 | 1 |
| 26 | TUBE CAPILLARY | DB62-00763A | 5K SBS,C1220T-0,-,-, | 1 | - | - | 1 |
| | | DB96-00197B | OK-P/J,1.2xL110 | - | 1 | 1 | - |
| 27 | GASKET | DB63-20003A | -,EPDM,T0.8,-,-,-,-,- | 1 | 1 | 1 | 1 |
| 28 | OLP | DB35-00006F | -,39A050HS | 1 | - | - | - |
| | | DB47-20002S | 10/75,160,MRA12051-12008,-,- | - | 1 | - | - |
| | | DB47-20002G | 12/78,150,MRA12041-12008,-,- | - | - | 1 | - |
| | | DB35-00006D | -,MRA12100-12008,165/ | - | - | - | 1 |
| 29 | COVER-TERMINAL | DB63-10026A | GE,-,NORYL,-,SEI-701 | 1 | 1 | 1 | 1 |
| 30 | SPRING OLP | DB67-60028A | SUS304-WPA,D24.9 | 1 | 1 | 1 | 1 |
| 31 | NUT-TERMINAL COVER | DB60-30001A | -,-,M5,-,SM20C,- | 1 | 1 | 1 | 1 |
| 33 | ASSY CONTROL-BOX | DB93-00983B | CO,-,5200BTU,-,-,- | 1 | - | - | - |
| | | DB93-00427F | CO,-,5K BTU,AW05F0 | - | 1 | - | - |
| | | DB93-00427D | -,-,-,-,-,-,-,-,-,-,-,- | - | - | 1 | - |
| | | DB93-00427E | -,-,-,-,-,-,-,-,-,-,-,- | - | - | - | 1 |
| 33-1 | PLATE-CONTROL | DB70-00019A | SGCC-M,-,T0.45,-,-,AW | 1 | 1 | 1 | 1 |
| 33-2 | SWITCH-ROTARY | 3406-001045 | 240V,25A,6P,L14mm | 1 | 1 | 1 | 1 |
| 33-3 | THERMOSTAT | DB47-20074D | 13.8,10,MOLD CAM,OK-P/J, | 1 | 1 | 1 | 1 |
| 33-4 | C-OIL | 2501-001292 | 5/35UF,270VAC,BK,53X65MM,14 | 1 | - | - | - |
| | | 2501-001226 | C-OIL,25UF,370VAC | - | 1 | - | - |
| | | 2501-001225 | 20uF,400V,BK,53x65mm,20.6 | - | - | 1 | - |
| | | 2501-001224 | 15uF,400V,BK,53x65mm,20.6 | - | - | - | 1 |
| 33-5 | CLIP-CAPACITOR | DB65-00031A | SGCC-M,T0.45,-,-,OK- | 1 | 1 | 1 | 1 |
| 33-6 | POWER CORD | DB39-10032N | SPT-3,125V,10A,SC-94445R | 1 | - | - | - |
| | | DB39-00346A | -,-,-,125V,10A(1.0 | - | 1 | - | - |
| | | DB39-10086G | -,-,-,250V,10A,-,-, | - | - | 1 | - |
| | | DB39-10032S | AW05F05BA,-,TANDEM,250V, | - | - | - | 1 |
| 33-7 | C-FILM | 2301-001375 | 1500nF,+10-5%,450V | - | 1 | 1 | 1 |
| 33 | ASSY CABINET | DB90-00155C | AW05F05AA/XAX | 1 | 1 | 1 | 1 |
| 34 | ROTARY COMPRESSOR | 39A050HS1KA | 115V 60Hz 1Ph | 1 | - | - | - |
| | | 44A056JU1KA | 1Ph, 50Hz, R22, | - | 1 | - | - |
| | | 44C052MU1KA | 200-220V, 1Ph, 5 | - | - | 1 | - |
| | | 44C052IU1KA | 208-230V,60H | - | - | - | 1 |
| 35 | DRAIN-TUBE | DB67-20028A | PP,-,-,- | 1 | 1 | 1 | 1 |
| 36 | RUBBER-DRAIN | DB73-20135A | NR,1,-,AW08D0BA | 1 | 1 | 1 | 1 |

MEMO