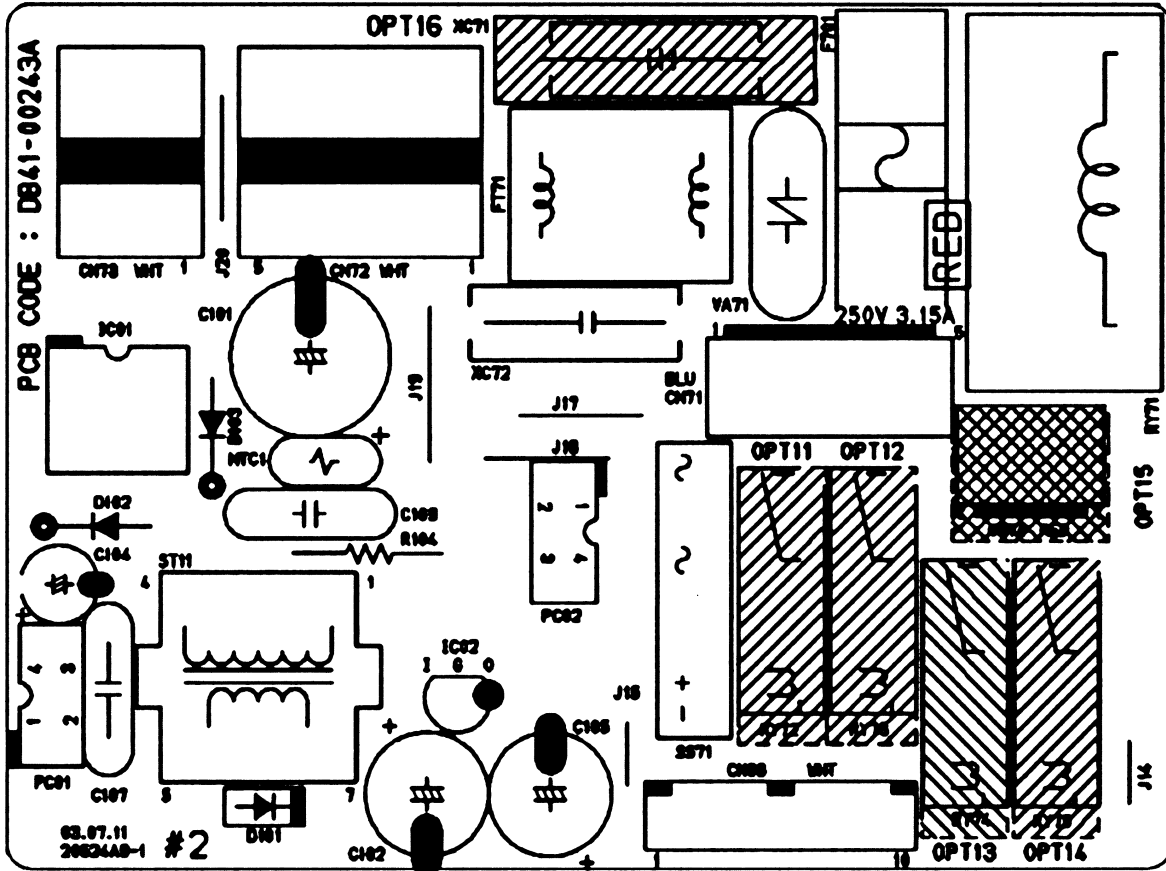


7. PCB Diagram

7-1 MAIN PCB (AC) : DB93-02592C(Standard)

■ TOP

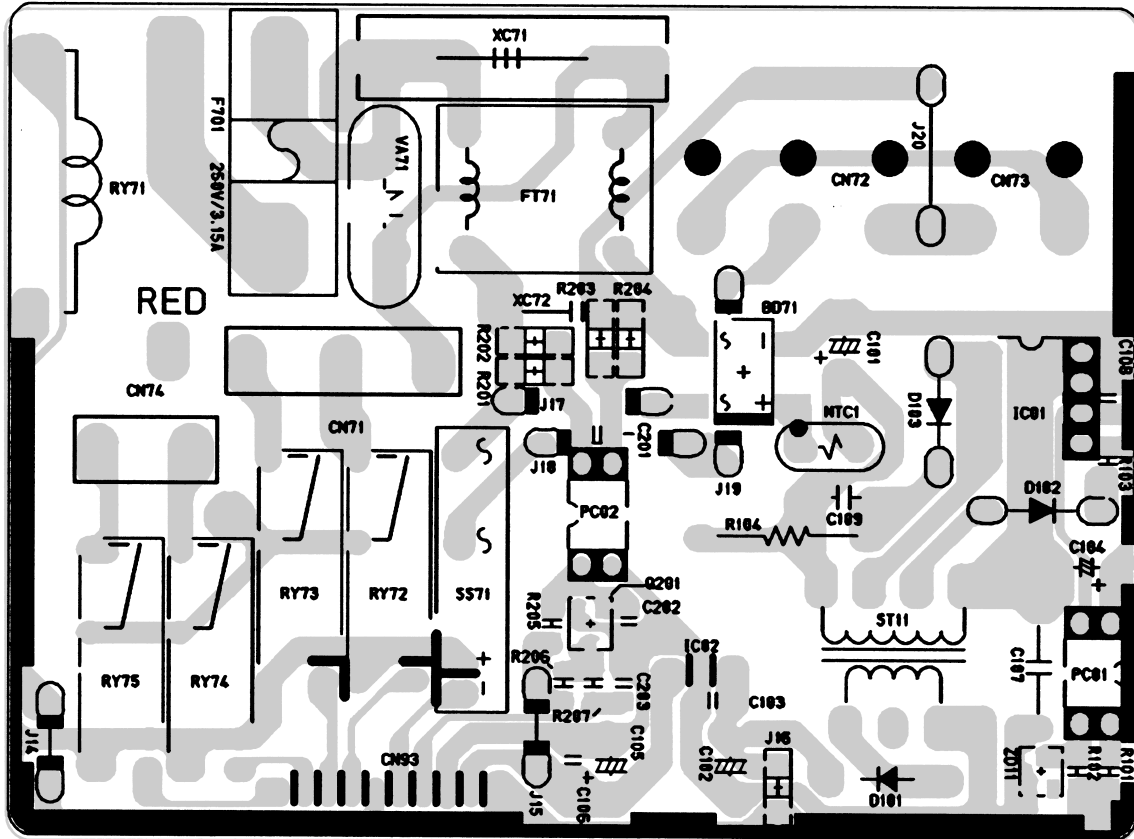


PCB BOARD: DB41-00243A	OPT11	OPT12	OPT13	OPT14	OPT15	OPT16 (XC71)
DB93-02592A	○	○	×	×	×	220nF/250V
DB93-02592B	×	×	×	×	×	220nF/250V
DB93-02592C	○	○	○	×	○	220nF/250V
DB93-02592D	○	×	○	×	○	220nF/250V
DB93-02592E	○	○	○	○	○	220nF/250V
DB93-02592F	○	×	○	○	○	220nF/250V
DB93-02592G	×	×	×	×	×	220nF/250V
DB93-02592H	○	×	×	×	×	220nF/250V
DB93-02592J	○	×	○	×	○	220nF/250V
DB93-02592K	○	○	○	×	○	220nF/250V

■ Parts List

Location No.	Description	Specification	Q'TY	Remark
C101	C-AL	10uF,20%,450V,GP,TP,10x20mm,5	1	SNA
C102	C-AL	470uF,20%,25V,GP,TP,10x16,5	1	SNA
C104	C-AL	47uF,20%,50V,GP,TP,6.3x11,5	1	SNA
C105	C-AL	470uF,20%,16V,GP,TP,10x12.5,5	1	SNA
C107	C&R NETWORK	2.2nF,20%,400V,Y5U,TP,12.5x6,10,12Mohm,0.5W,5%, TP,4x9mm	1	SNA
C109	C-CERAMIC,DISC	100nF,20%,1KV,TP,6	1	SNA
XC71	C-FILM,MPEF	220NF,10%,275V,BK,26.5x8.5x17mm,22.5	1	SNA
XC72	C-FILM,MPEF	100nF,10%,275V,BK,18x6x12,15	1	SNA
FT71	CHOKE-COIL	LS404190M,AS-S660,19mH,+50,-30%,-,300Mohm,2A,-,-,-	1	SNA
CN71	CONNECTOR-HEADER	1WALL,3P/5P,1R,3.96mm,STRAIGHT,SN	1	SNA
CN72	CONNECTOR-HEADER	1WALL,5P,1R,3.96mm,ANGLE,SN	1	SNA
CN73	CONNECTOR-HEADER	1WALL,2P/3P,1R,3.96mm,ANGLE,SN	1	SNA
CN74	CONNECTOR-HEADER	1WALL,3P,1R,3.96mm,STRAIGHT,SN	1	SNA
CN93	CONNECTOR-HEADER	BOX,10P,1R,-,STRAIGHT,SN	1	SNA
D101	DIODE-RECTIFIER	UG2D,200V,2A,DO-204AC,TP	1	SNA
D103	DIODE-RECTIFIER	UF4007,1KV,1A,DO-41,TP	1	SNA
D102	DIODE-SWITCHING	1N4148,100V,200mA,DO-35,TP	1	SNA
F701	FUSE-CARTRIDGE	250V,3.15A,TIME-LAG,GLASS,5x20mm	1	SNA
IC01	IC-PWM CONTROLLER	VIPER12ADIP,DIP,8P,300MIL,PLASTIC	1	SNA
IC02	IC-VOLT REGU	78L05A,TO-92,3P,-,PLASTIC,4.6	1	SNA
PC01	PHOTO-COUPLER	TR,130-260%,200mW,DIP-4,ST	1	SNA
PC02	PHOTO-COUPLER	TR,50-150%,200mW,DIP-4,ST	1	SNA
RY72,RY73,RY74	RELAY-MINIATURE	DC12V,3A 250V AC,-,-,10MS,10MS	3	SNA
RY71	RELAY-POWER	12VDC,0.9W,75mA,SPST,MAX 20msec,10mS	1	SNA
R104	R-METAL OXIDE(S)	91Kohm,5%,2W,AA,TP,4x12mm	1	SNA
SS71	SSR	12Vdc,-,2A,1mS,1mS	1	SNA
NTC1	THERMISTOR-NTC	22ohm,1.4A,3100K,9.5mW/C,-,7.0,-	1	SNA
ST11	TRANS	S/W TRANS;-,-,G-P/J,EE1916-V10,-,-,-	1	SNA
VA71	VARISTOR	560V,2500A,17.5x7.5mm,TP	1	SNA

■ BOTTOM

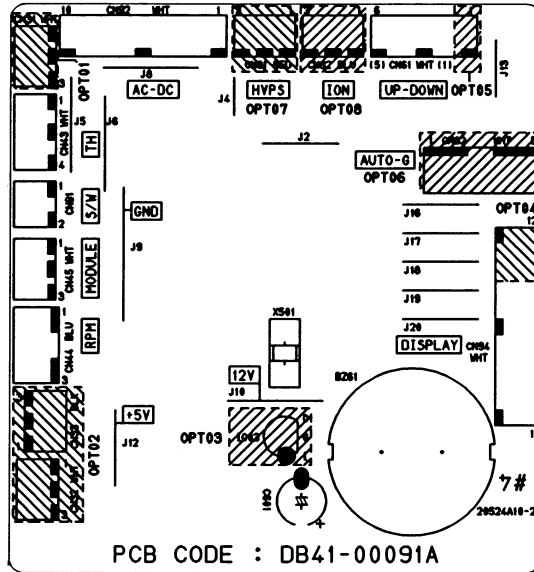


■ Parts List

Location No.	Description	Specification	Q'TY	Remark
BD71	DIODE-BRIDGE	DF06S,600V,1A,SMD-4,TP	1	SNA
C103,C106,C108,C201	C-CERAMIC,CHIP	100nF,+80-20%,50V,Y5V,TP,2012	4	SNA
C202,C203	C-CERAMIC,CHIP	10nF,+80-20%,50V,Y5V,TP,2012	2	SNA
Q201	TR-SMALL SIGNAL	2SC2412K,NPN,200mW,SOT-23,TP,1	1	SNA
R101	R-CHIP	100ohm,5%,1/10W,DA,TP,2012	1	SNA
R102	R-CHIP	2.2Kohm,5%,1/10W,DA,TP,2012	1	SNA
R103	R-CHIP	6.8ohm,5%,1/10W,DA,TP,2012	1	SNA
R201,R202,R203,R204	R-CHIP	100Kohm,5%,1/4W,DA,TP,3216	4	SNA
R205	R-CHIP	10Kohm,5%,1/10W,DA,TP,2012	1	SNA
R206,R207	R-CHIP	1Kohm,5%,1/10W,DA,TP,2012	2	SNA
ZD11	DIODE-ZENER	BZX84-C11,10.4-11.6V,350mW,SOT-23,TP	1	SNA

7-2 MAIN PCB (DC) : DB93-01325E(Standard)

TOP

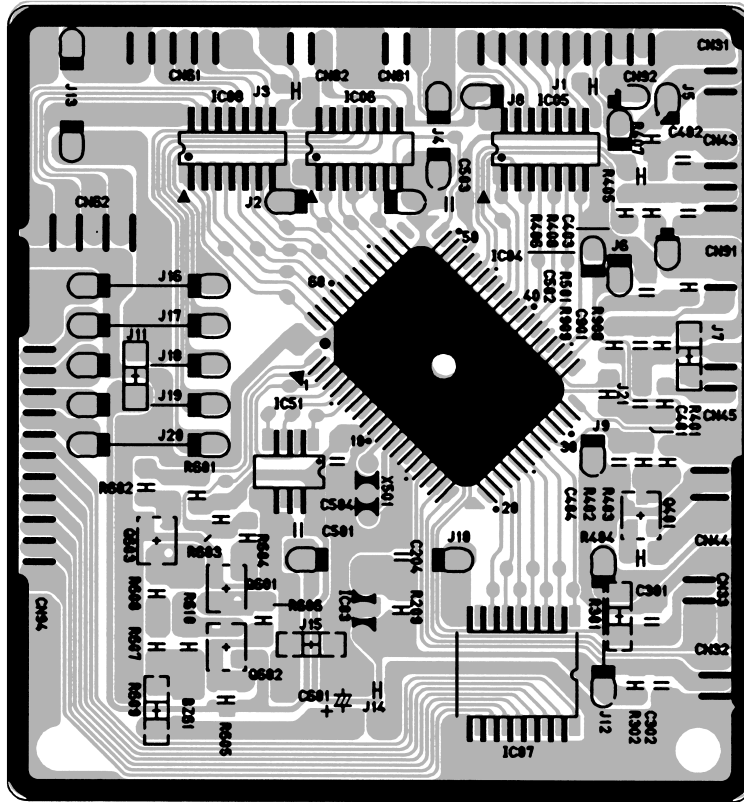


ASS'Y PCB	OPT01	OPT02	OPT03	OPT04 (CN94)	OPT05	OPT06	OPT07	OPT08
DB93-01325A	x	x	x	SMW200-09(WHT)	SMW200-05(WHT)	x	x	x
DB93-01325B	x	x	x	SMW200-12(WHT)	SMW200-05(WHT)	o	x	o
DB93-01325C	x	x	x	SMW200-12(WHT)	SMW200-05(WHT)	o	o	o
DB93-01325E	x	x	x	SMW200-09(WHT)	SMW200-06(WHT)	x	x	x
DB93-01325F	x	x	x	SMW200-12(WHT)	SMW200-06(WHT)	o	x	o
DB93-01325G	x	x	x	SMW200-12(WHT)	SMW200-06(WHT)	o	o	o
DB93-01325J	x	x	x	SMW200-12(WHT)	SMW200-05(WHT)	o	o	x
DB93-01325K	x	x	x	SMW200-12(WHT)	SMW200-05(WHT)	o	x	x
DB93-01325L	x	x	x	SMW200-12(WHT)	SMW200-06(WHT)	o	o	x

Parts List

Location No.	Description	Specification	Q'TY	Remark
BZ61	BUZZER-PIEZO	BUZZER-PIEZO;80DB,9V ,-,2.0KHz,-	1	SNA
X501	RESONATOR-CERAMIC	10MHz,0.5%,TP,10.0x5.0x8.0mm	1	SNA
C601	C-AL	47uF,20%,50V,GP,TP,6.3x11,5	1	SNA
CN31	CONNECTOR-HEADER	BOX,3P,1R,2mm,STRAIGHT,SN	1	SNA
CN32	CONNECTOR-HEADER	BOX,3P,1R,2mm,STRAIGHT,SN	1	SNA
CN33	CONNECTOR-HEADER	BOX,3P,1R,2mm,STRAIGHT,SN	1	SNA
CN43	CONNECTOR-HEADER	BOX,4P,1R,2mm,STRAIGHT,SN	1	SNA
CN44	CONNECTOR-HEADER	BOX,3P,1R,2.5mm,STRAIGHT,SN	1	SNA
CN45	CONNECTOR-HEADER	BOX,3P,1R,2mm,STRAIGHT,SN	1	SNA
CN61	CONNECTOR-HEADER	BOX,5P,1R,2mm,STRAIGHT,SN	1	SNA
CN62	CONNECTOR-HEADER	BOX,6P,1R,2.5mm,STRAIGHT,SN	1	SNA
CN81	CONNECTOR-HEADER	BOX,3P,1R,2mm,STRAIGHT,SN,RED	1	SNA
CN82	CONNECTOR-HEADER	BOX,3P,1R,2mm,STRAIGHT,SN,BLU	1	SNA
CN91	CONNECTOR-HEADER	BOX,2P,1R,2mm,STRAIGHT,SN	1	SNA
CN92	CONNECTOR-HEADER	BOX,10P,1R,-,STRAIGHT,SN	1	SNA
CN94	CONNECTOR-HEADER	BOX,9P,1R,2mm,STRAIGHT,SN	1	SNA
IC03	IC-VOLTAGE	7533,TO-92,3P,-,SINGLE,-,PLASTIC	-	SNA

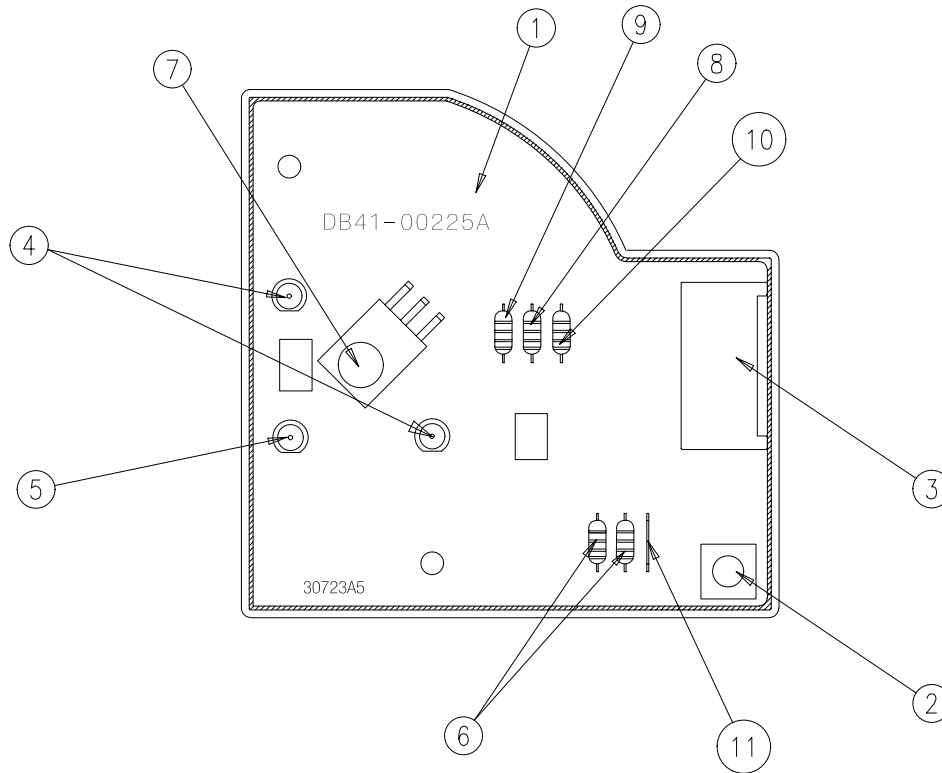
■ BOTTOM



■ Parts List

Location No.	Description	Specification	Q'TY	Remark
C204,C301,C302,C402,C403 C501,C502,C503,C504,C901	C-CERAMIC,CHIP	100nF,+80-20%,50V,Y5V,TP,2012	10	SNA
C401	C-CERAMIC,CHIP	1nF,10%,50V,X7R,TP,2012,-	1	SNA
C404	C-CERAMIC,CHIP	10nF,+80-20%,50V,Y5V,TP,2012	1	SNA
IC04	IC-MICOM	S3C8489XZZ-QTR5,-,64,+5V,10MHz,STM-0219-O	1	SNA
IC05,IC06,IC08	TR-ARRAY	2003,NPN,7,1W,SOP-16,ST,1000	3	SNA
IC07	IC-SOURCE DRIVER	TD62783AFW,SOL,18P,-,8,-500mA,TP,	1	SNA
IC51	IC-EEPROM	93LC56,128x16Bit,SOP,8P,150MIL,-,2.5V,-	1	SNA
Q401,Q601,Q603	TR-SMALL SIGNAL	2SC2412K,NPN,200mW,SOT-23,TP,1	3	SNA
Q602	TR-SMALL SIGNAL	MMST2907A,PNP,200mW,SOT-23,TP,100-	1	SNA
R209,R301,R302,R401,R402 R404,R602,R604,R610	R-CHIP	1Kohm,5%,1/10W,DA,TP,2012	9	SNA
R403,R407,R408	R-CHIP	6.8Kohm,5%,1/10W,DA,TP,2012	3	SNA
R405,R406	R-CHIP	330ohm,5%,1/10W,DA,TP,2012	2	SNA
R501,R601,R603,R605,R908	R-CHIP	10Kohm,5%,1/10W,DA,TP,2012	5	SNA
R606,R909	R-CHIP	4.7Kohm,5%,1/10W,DA,TP,2012	2	SNA
R607,R608	R-CHIP	470ohm,5%,1/10W,DA,TP,2012	2	SNA
R609	R-CHIP	560ohm,5%,1/10W,DA,TP,2012	1	SNA

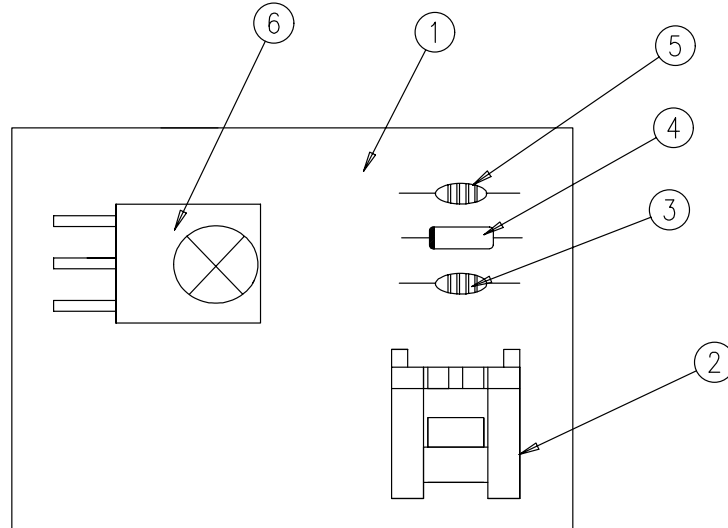
7-3 ASS'Y DISPLAY PCB(18K/24K) : DB93-02525B



■ Parts List

No.	Description	Specification	Q'TY	Remark
1	PCB-DISPLAY	FR-1	1	SNA
2	TACT SWITCH	YTP-1280A	1	SNA
3	CONNECTOR	SMSW200-08(WHT)	1	SNA
4	LED-LAMP	GRN(SM3517F6T)	2	SNA
5	LED-LAMP	ORG(SO3517F6T)	1	SNA
6	RESISTOR	470ohm, 1/2W	2	SNA
7	MODULE REMOCON	FRP4021H10	-	
8	DIODE	1N4148	-	
9	C-CERAMIC	1nF/50V	-	
10	C-CERAMIC	100nF/50V	-	
11	JUMPER	10mm	1	SNA

7-4 ASS'Y MODULE PCB(18K/24K) : DB93-01369B



■ Parts List

No.	Description	Specification	Q'TY	Remark
1	PCB MODULE	FR1 T1.6	1	SNA
2	CONNECTOR-HEADER	BOX, 3P, 1R, 2mm, ANGLE, SN	1	SNA
3	C-CERAMIC, MLC-AXIAL	1nF, 10%, 50V, Y5P, TP, 1.9 x 3.5, -	1	SNA
4	DIODE-SWITCHING	1N4148, 100V, 200mA, DO-35, TP	1	SNA
5	C-CERAMIC, MLC-AXIAL	100nF, +80-20%, 50V, Y5V, TP, 3.5 x 1	1	SNA
6	MODULE	FRP4021H10	1	SNA

MEMO