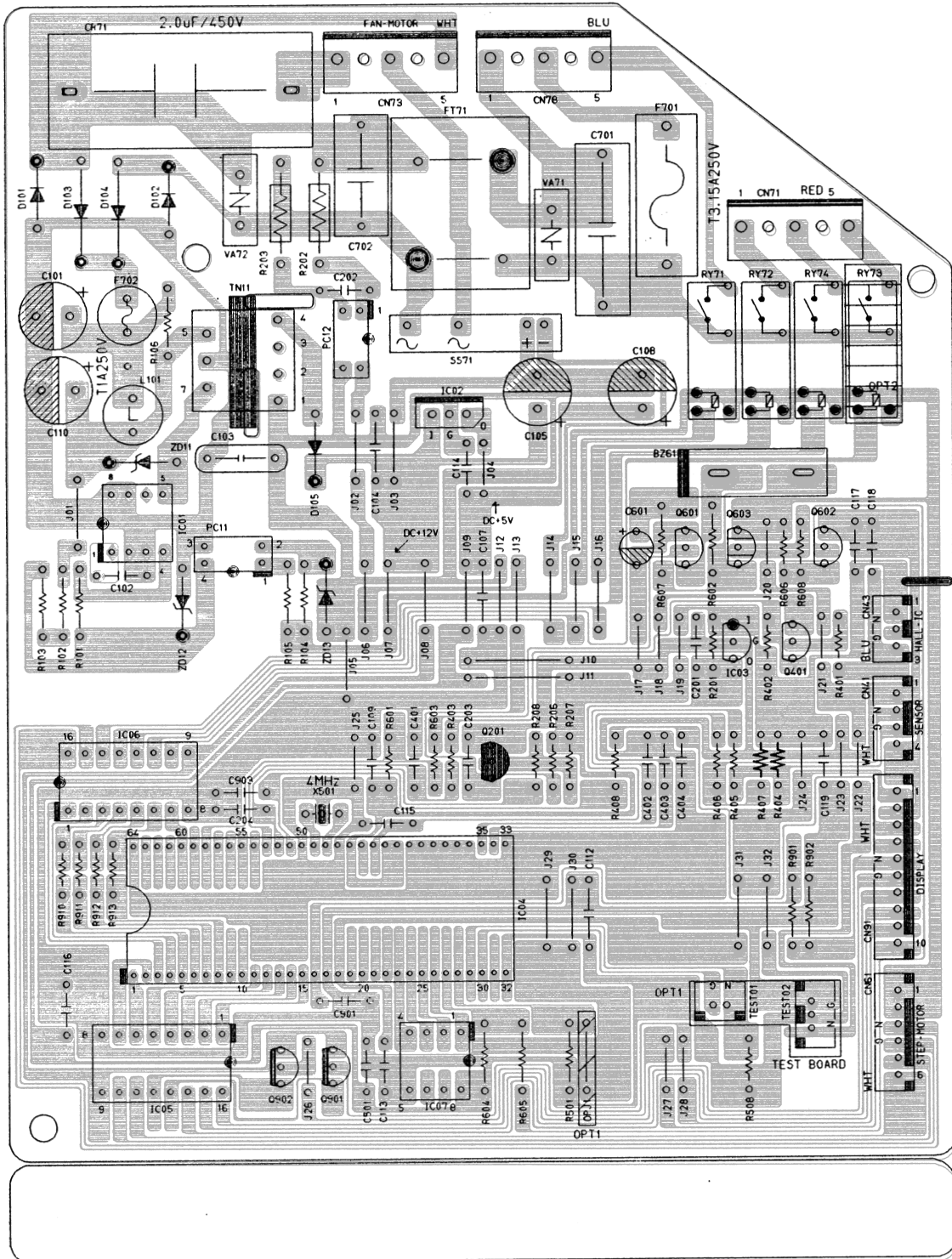


8. PCB Diagrams

8-1 Indoor Unit

8-1-1 Main Unit(PD-SH30ZC-01)



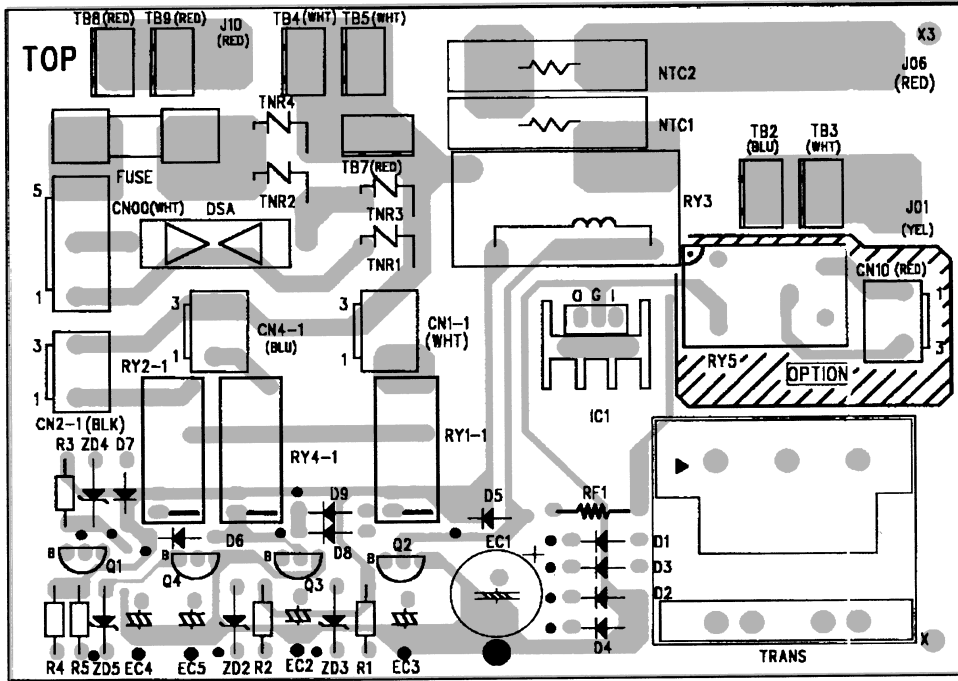
■ Parts List

| No | Design-Location | Description | Specification | Q'TY |
|----|--|---------------------|--|------|
| 1 | C103 | C-CERAMIC,DISC | 2.2nF,20%,400V,Y5U,TP,12. | 1 |
| 2 | C702 | C-FILM,MPPF | 100nF,10%,275V,BK,18x6x12,15 | 1 |
| 3 | CR71 | C-FILM,MPPF | 2000nF,+10-5%,450V,BK,38x18x | 1 |
| 4 | C701 | C-FILM,MPEF | 220NF,10%,275V,BK,26.5X8.5X1 | 1 |
| 5 | RY71,72,74 | RELAY-MINIATURE | 12VDC,200MW,3000MA,1FORM | 3 |
| 6 | SS71 | SSR | 12Vdc,-,2A,1mS,1mS | 1 |
| 7 | IC04 | IC MICOM | S3C8469(SDIP) | 1 |
| 8 | IC02 | IC-VOLT REGU | KA7805A,TO-220AB,1A,0/125C, | 1 |
| 9 | TN11 | TRANS | 2UEW0.30/2UEW0.45,1.5KV,1KHz,-,7Pi | 1 |
| 10 | FT71 | CHOKE-COIL | LSA-05230P,AC250V,2A,30.5x22x3 | 1 |
| 11 | BZ61 | BUZZER | CBE2220BA,STICK,-,-,-,-,-,- | 1 |
| 12 | F701 | FUSE | FST,250V,3.15A,20MM,VDE,50T-03 | 1 |
| 13 | F701 | HOLDER-FUSE | FH-51H,7.5A,-,-,-,-,- | 1 |
| 14 | D101,102,103,104 | DIODE-RECTIFIER | 1N4007,1000V,1A,DO-41,TP | 4 |
| 15 | D105 | DIODE-RECTIFIER | UG2B,100V,2A,DO-204AC,TP | 1 |
| 16 | ZD12 | DIODE-ZENER | DIODE-ZENER;MTZ3.6A,3.6V,3.455-3.695V,50 | 1 |
| 17 | ZD13 | DIODE-ZENER | DIODE-ZENER;MTZJ11B,11V,10.5-11.05V,500m | 1 |
| 18 | ZD11 | DIODE-TVS | DIODE-TVS;ST02D-200,185/200/215V,200W,DO | 1 |
| 19 | Q603 | TR-SMALL SIGNAL | TR-SMALL SIGNAL;KSA708-Y,PNP,800mW,TO-92 | 1 |
| 20 | Q401,601,602 | TR-SMALL SIGNAL | TR-SMALL SIGNAL;KSC945,NPN,250mW,TO-92,T | 3 |
| 21 | Q901,902 | TR-DIGITAL | TR-DIGITAL;KSR2002,PNP,300MW,10K/10K,TO- | 2 |
| 22 | Q201 | TR-DIGITAL | TR-DIGITAL;KSR1002,NPN,300MW,10K/10K,TO- | 1 |
| 23 | PC11 | PHOTO-COUPLER | PHOTO-COUPLER;TR,50-600%,200mW,DIP-4,ST | 1 |
| 24 | PC12 | PHOTO-COUPLER | PHOTO-COUPLER;TR,20-300%,200mW,DIP-4,ST | 1 |
| 25 | IC01 | IC-PWM CONTROLLER | IC-PWM CONTROLLER;255,DIP,8P,300MIL,PLAS | 1 |
| 26 | VA71,72 | VARISTOR | 560V,2500A,17.5x7.5mm,TP | 2 |
| 27 | R405,406 | R-CARBON | 330ohm,5%,1/8W,AA,TP,1.8x3.2mm | 2 |
| 28 | R104,105 | R-CARBON | 220OHM,5%,1/4W,AA,TP,2.4X6.4MM | 2 |
| 29 | R101 | R-CARBON | 470OHM,5%,1/4W,AA,TP,2.4X6.4MM | 1 |
| 30 | R206,501,502,601,604,606,902 | R-CARBON | 10KOHM,5%,1/8W,AA,TP,1.8X3.2MM | 7 |
| 31 | R201,207,208,401,403,408,603,605,608 | R-CARBON | 1KOHM,5%,1/8W,AA,TP,1.8X3.2MM | 9 |
| 32 | R910,911,912,913 | R-CARBON | 3.3KOHM,5%,1/8W,AA,TP,1.8X3.2MM | 4 |
| 33 | R102,103 | R-CARBON | 330KOHM,5%,1/4W,AA,TP,2.4X6.4MM | 2 |
| 34 | R106,901 | R-CARBON | 4.7KOHM,5%,1/8W,AA,TP,1.8X3.2MM | 2 |
| 35 | R607 | R-CARBON | 560OHM,5%,1/4W,AA,TP,2.4X6.4MM | 1 |
| 36 | R402 | R-CARBON | 6.8KOHM,5%,1/8W,AA,TP,1.8X3.2MM | 1 |
| 37 | R602 | R-CARBON(S) | 1KOHM,5%,1/2W,AA,TP,2.4X6.4M | 1 |
| 38 | R202,203 | R-METAL OXIDE(S) | 51Kohm,5%,2W,AA,TP,4x12 | 2 |
| 39 | R404,407 | R-METAL | 6.8Kohm,1%,1/8W,AA,TP,1.8x3.2m | 2 |
| 40 | C203,204,401 | C-CERAMIC,MLC-AXIAL | 10nF,+80-20%,25V,Y5V | 3 |
| 41 | C404,903 | C-CERAMIC,MLC-AXIAL | 1nF,10%,50V,Y5P,TP,1 | 2 |
| 42 | C102,104,107,109,114,116,117,118,201, 202,402,403,501,901 | C-CERAMIC,MLC-AXIAL | 100nF,+80-20%,50V,Y5 | 14 |
| 43 | C105 | C-AL | 1000uF,20%,25V,GP,TP,10x20,5 | 1 |
| 44 | C601 | C-AL | 47uF,20%,50V,GP,TP,6.3x11,2.5 | 1 |
| 45 | C108 | C-AL | 470uF,20%,25V,GP,TP,10x16,5 | 1 |
| 46 | C101,110 | C-AL | 6.8uF,20%,450V,GP,TP,10x16mm,5 | 2 |
| 47 | X501 | RESONATOR-CERAMIC | 4MHz,0.5%,TP,10.0x5.0x | 1 |
| 48 | F702 | FUSE-RADIAL LEAD | 250V,1A,TIME-LAG,-,8.5x | 1 |
| 49 | CN78 | CONNECTOR-HEADER | 1WALL,3P/5P,1R,3.96mm,S | 1 |
| 50 | CN71 | CONNECTOR-HEADER | 1WALL,3P/5P,1R,3.96mm,S | 1 |
| 51 | CN73 | CONNECTOR-HEADER | 1WALL,3P/5P,1R,3.96mm,S | 1 |
| 52 | CN91 | CONNECTOR-HEADER | BOX,10P,1R,2.5mm,STRAIGH | 1 |
| 53 | CN43 | CONNECTOR-HEADER | BOX,3P,1R,2.5mm,STRAIGH | 1 |
| 54 | CN41 | CONNECTOR-HEADER | BOX,4P,1R,2.5mm,STRAIGH | 1 |
| 55 | CN61 | CONNECTOR-HEADER | BOX,6P,1R,2.5mm,STRAIGH | 1 |
| 56 | IC07 | IC-MASK ROM | 93LC56B,8BIT,-,DIP,8P,-,-,- | 1 |
| 57 | IC03 | IC-RESET | KA7533,DIP,-,-,-,-,- | 1 |
| 58 | IC06 | IC-DRIVE | KID65003AP,DIP,16P,STICK,TR-AR | 2 |
| 59 | L101 | COIL CHOKE | 5.0mH,-,8.0*11.0,-,-,-,PE-M10 | 1 |
| 60 | | WIRE-SO COPPER | PI0.6,SN,T,52MM,TAPING_WI | 35 |
| 61 | | PCB-MAIN | PD-SH30ZC-00,FR-1,-,-,T1.6,W197 | 1 |

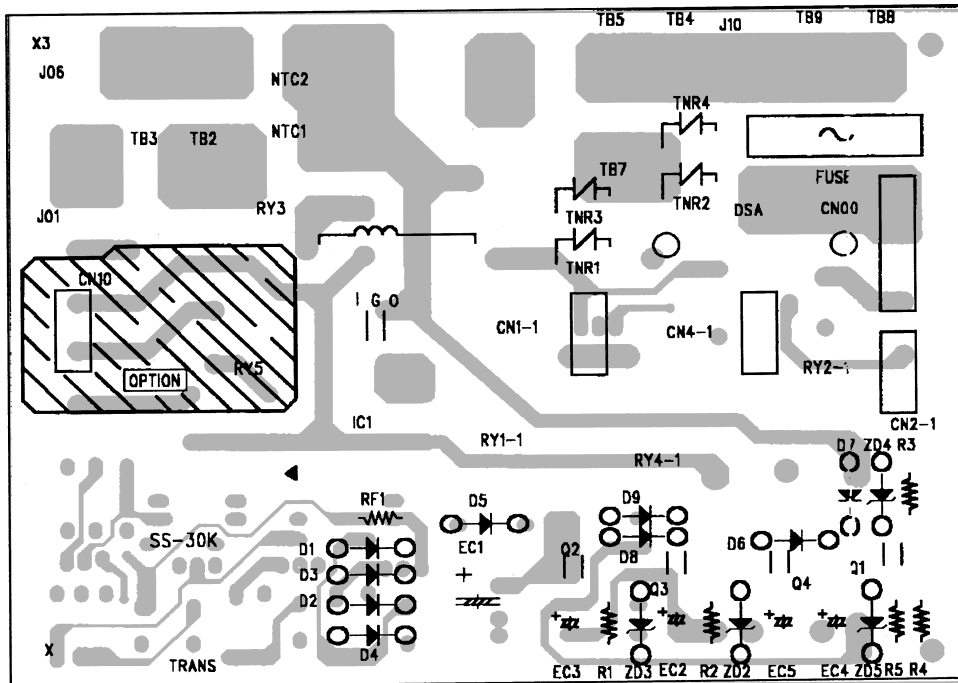
8-2 Outdoor Unit

8-2-1 Main PCB (DB93-00905B)

■ TOP



■ BOTTOM

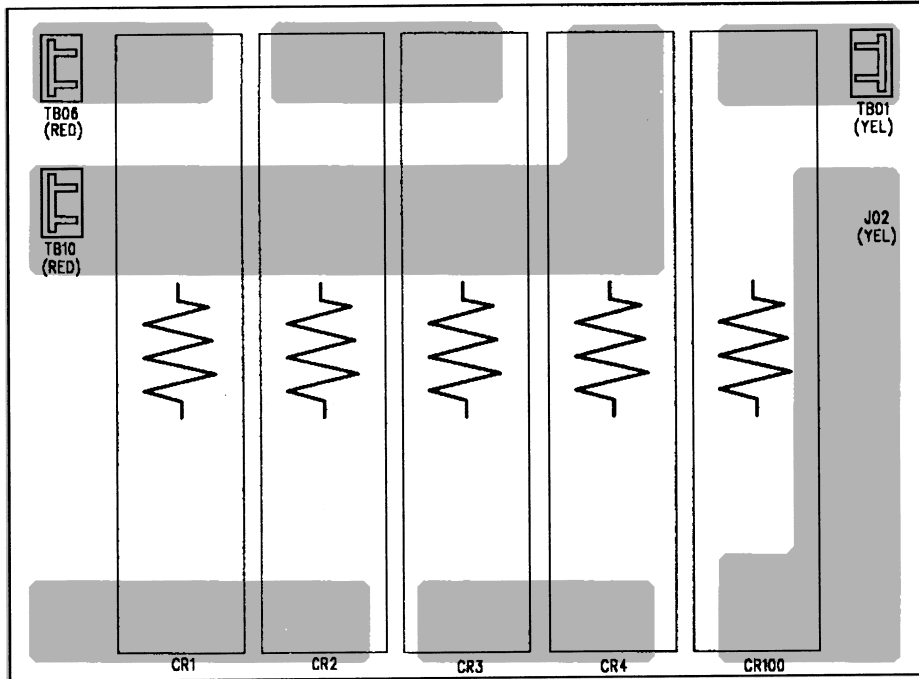


■ Parts List

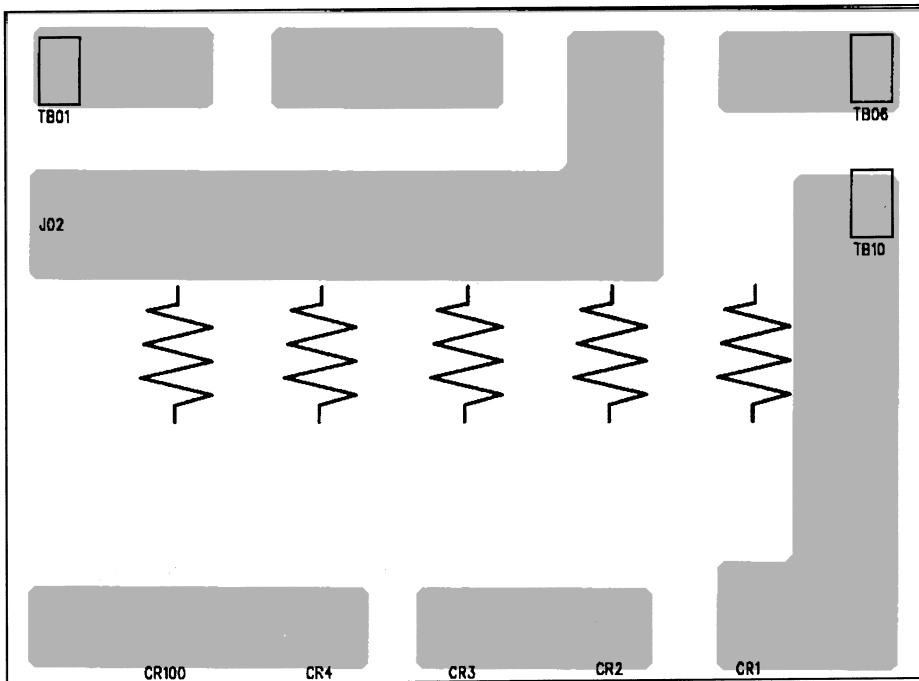
| No | Design-Location | Description | Specification | Q'TY |
|----|---------------------|-------------|------------------------------|------|
| 1 | | PCB MAIN | FR-4,FR704-7405 T1.6 135x100 | 1 |
| 2 | DSA | D.S.A. | DSA 332MA | 1 |
| 3 | RY1-1, RY2-1, RY4-1 | RELAY | F3AA012E | 3 |
| 4 | RY3 | RELAY | G4A-1A-E | 1 |
| 5 | TRANS | L.V.TRANS | 230VAC/DC17V/0.3A | 1 |
| 6 | IC1 | IC | KA7812 | 1 |
| 7 | HS | HEAT SINK | AL | 1 |
| 8 | CNT1,CNT2 | NTC | CNT2507 | 2 |
| 9 | FUSE | FUSE | 50T 250VAC 3.15A | 1 |
| 10 | FUSE | F/HOLDER | YH 20mm | 1 |
| 11 | TNR1~TNR3 | VARISTOR | 1NR14D561 | 3 |
| 12 | TNR4 | VARISTOR | 1NR14D471 | 1 |
| 13 | CN00 | CONNECTOR | YW396-05AV WHT | 1 |
| 14 | CN1-1 | CONNECTOR | YW396-03AV WHT | 1 |
| 15 | CN2-1 | CONNECTOR | YW396-03AV BLK | 1 |
| 16 | CN4-1 | CONNECTOR | YW396-03AV BLU | 1 |
| 17 | TB2~TB5, TB7~TB9 | T/TERMINAL | GP 881206-2 #250 | 7 |
| 18 | J01, J06, J10 | HARNESS AS | UL1015 AWG #14, YL 200mm | 1 |
| 19 | EC1 | C, ELECTRO | 1000 μ F 35V | 1 |
| 20 | EC2 | C, ELECTRO | 100 μ F 25V | 1 |
| 21 | EC3 | C, ELECTRO | 47 μ F 25V | 1 |
| 22 | EC4 | C, ELECTRO | 10 μ F 50V | 1 |
| 23 | EC5 | C, ELECTRO | 220 μ F 25V | 1 |
| 24 | Q1~Q4 | T.R | 2SC3198 | 4 |
| 25 | D1~D9 | DIODE | 1N4004 | 9 |
| 26 | R1 | R, CARBON | 4.7k Ω J 1/4w | 1 |
| 27 | R2, R3 | R, CARBON | 5.6k Ω J 1/4w | 2 |
| 28 | R4 | R, CARBON | 12k Ω J 1/4w | 1 |
| 29 | R5 | R, CARBON | 3.3k Ω J 1/4w | 1 |
| 30 | RF1 | R, FUSIBLE | FUSIBLE 27 Ω -J 1/2W | 1 |
| 31 | ZD2, ZD5 | ZENER DIODE | 8.2V 1W | 2 |
| 32 | ZD3, ZD4 | ZENER DIODE | 6.2V 1W | 2 |
| 33 | IC1 | SCREW | T1 3x8 | 1 |

8-2-2 Sub PCB (DB93-00873A)

■ TOP



■ BOTTOM

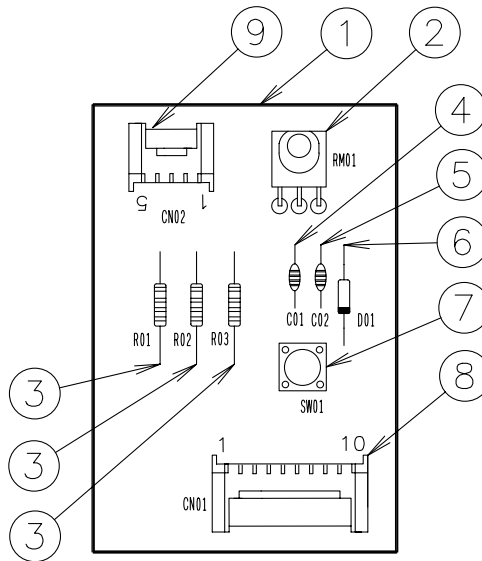


■ Parts List

| No | Design-Location | Description | Specification | Q'TY |
|----|------------------|-------------|---------------------------|------|
| 1 | | PCB SUB | FR-4,FR704-7405 135x100 | 1 |
| 2 | CR101~CR104 | R,CEMENT | 1.6Ω / 40W | 4 |
| 3 | CR105 | R,CEMENT | 0.7Ω / 40W | 1 |
| 4 | J02 | HARNESS | UL1015 AWG #14, YL, 200mm | 1 |
| 5 | TB01, TB06, TB10 | T/TERMINAL | GP 881206-2 #250 | 3 |

8-3 ASS'Y DISPLAY & MODULE

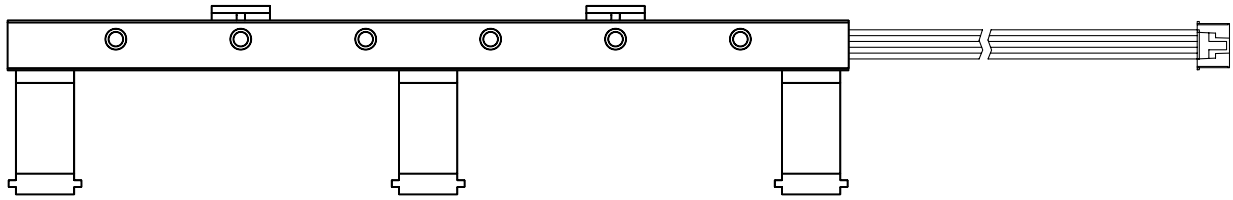
8-3-1 ASS'Y MODULE PCB : DB93-00830A



■ Parts List

| No | Description | Specification | Q'TY | Remark |
|----|-----------------|-----------------|------|--------|
| 1 | PCB-DISPLAY | FR-1 T1.6 | 1 | |
| 2 | MODULE REMOCON | PNA4612M00HB | 1 | |
| 3 | R-CARBON | RD 1/4 TP 471-J | 3 | |
| 4 | C-CERAMIC | CA 0A 50V 102Z | 1 | |
| 5 | C-CERAMIC | CA 0A 50V 104Z | 1 | |
| 6 | DIODE SWITCHING | 1N4148 | 1 | |
| 7 | TACT SWITCH | YTT-1230A | 1 | |
| 8 | CONNECTOR WAFER | SMAW200-10P | 1 | |
| 9 | CONNECTOR WAFER | SMAW200-5P | 1 | |

8-3-2 ASS'Y DISPLAY PCB : DB93-00823A



MEMO