

Wiring Diagrams

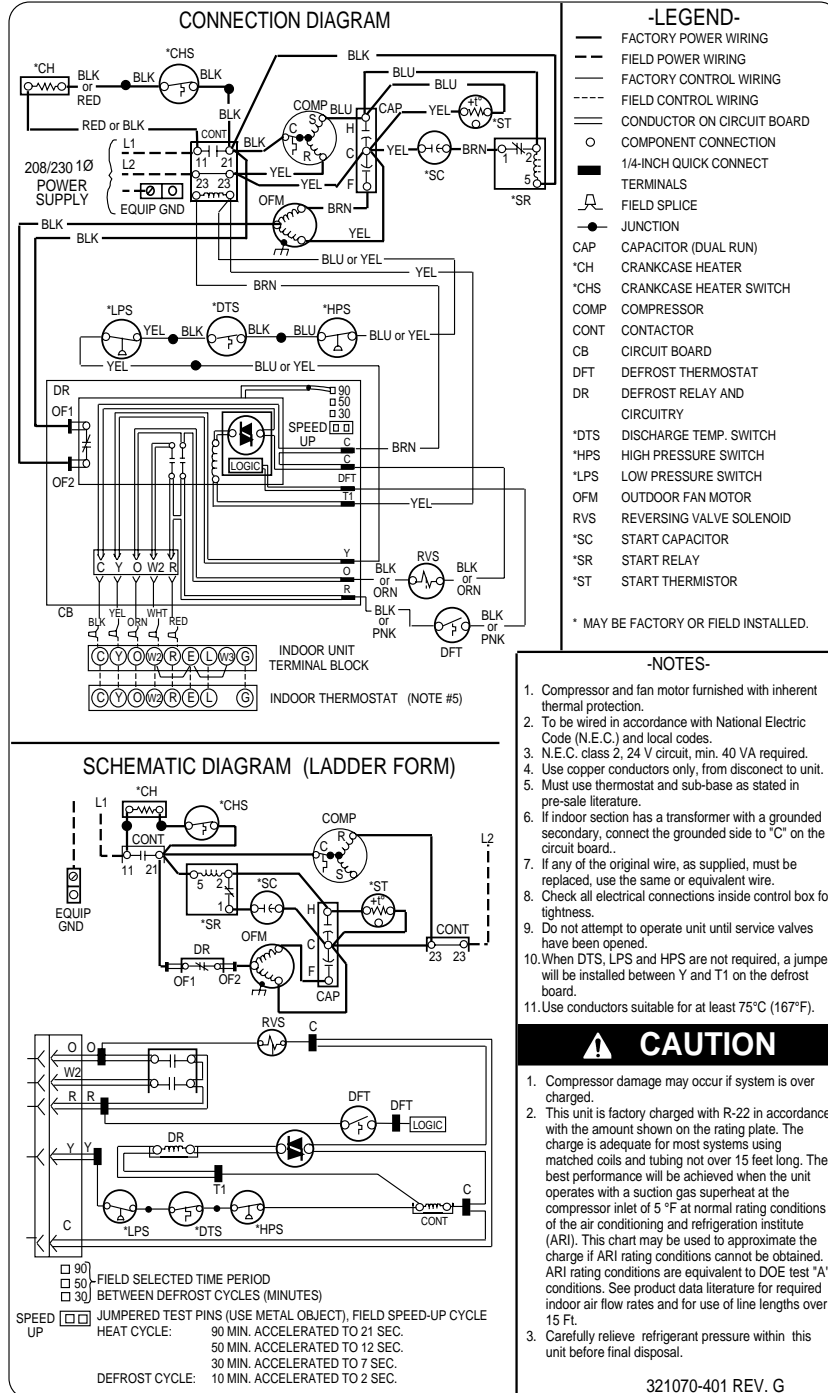
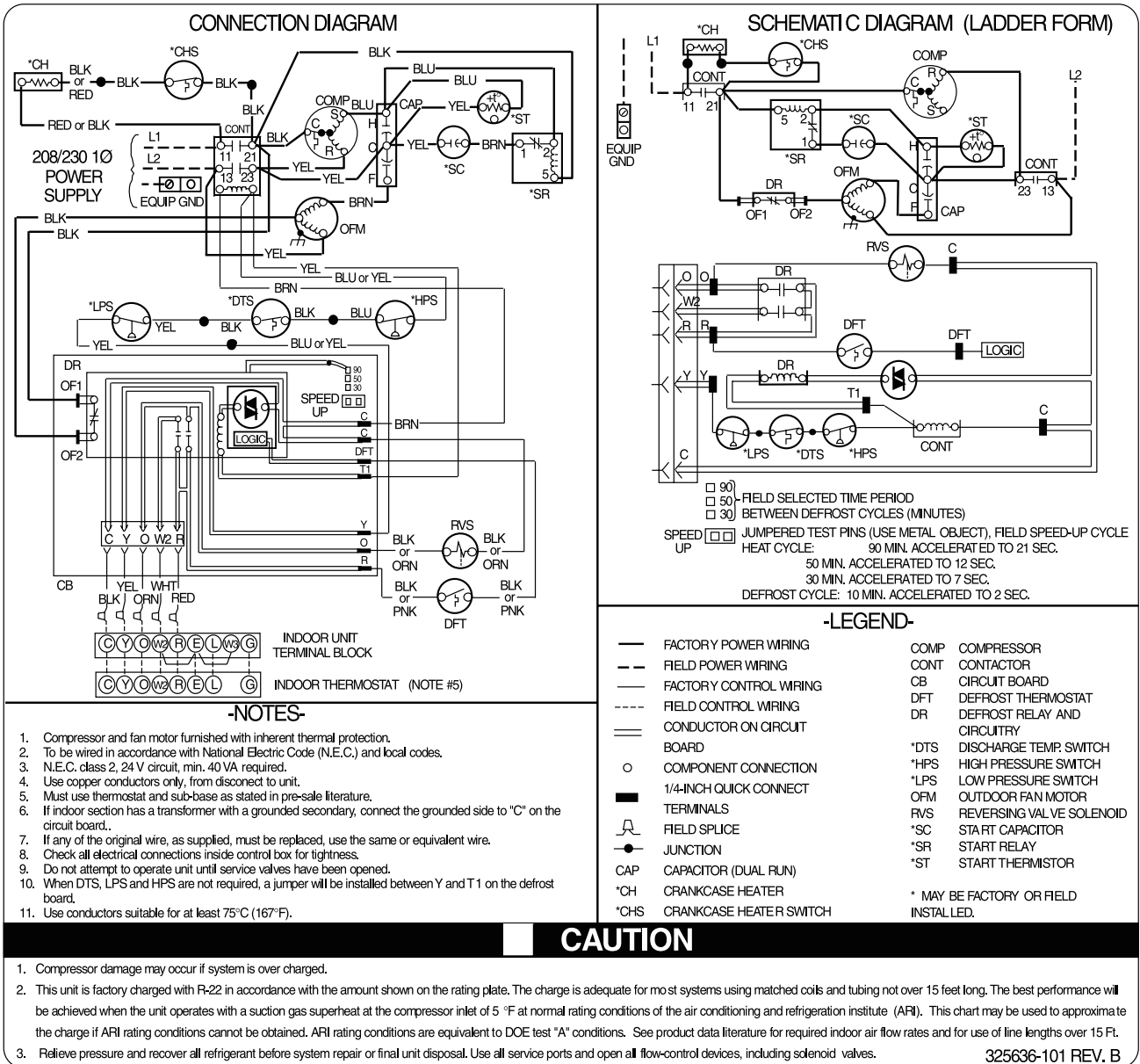
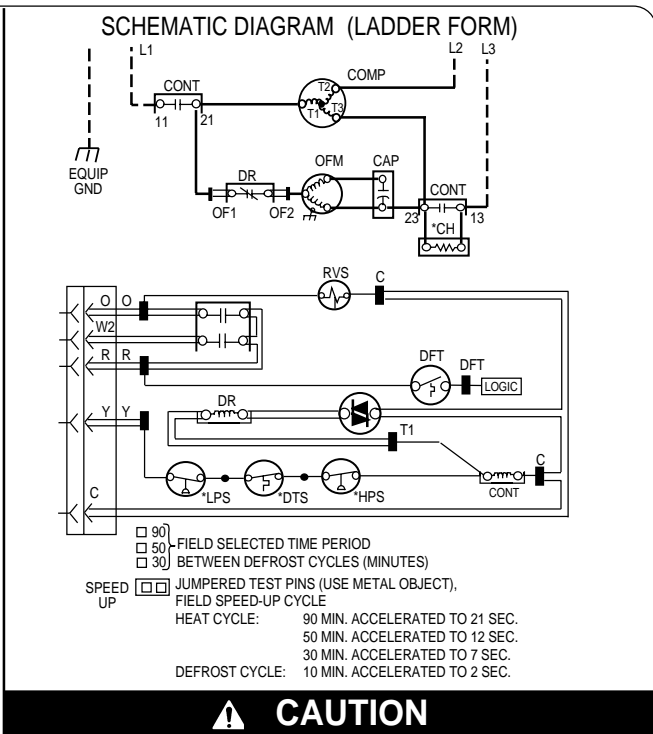
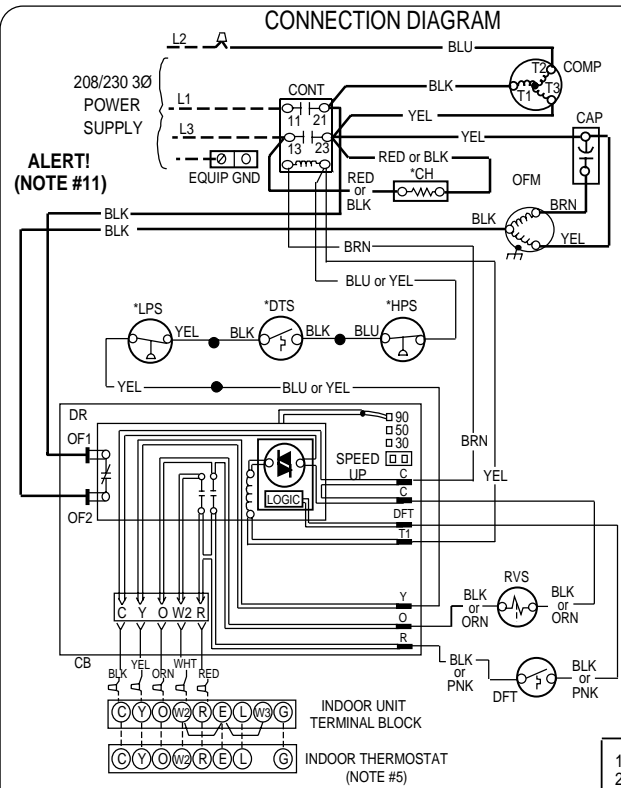


Fig. 1-38YC(C,G,S)018-048, 208-230v, 1 Phase, 60 Hz



A01477

Fig. 2-38YC(C,G,S,W)060, 208-230V, 1 Phase, 60 Hz



CAUTION

-LEGEND-

—	FACTORY POWER WIRING	CAP	CAPACITOR (RUN)
- - -	FIELD POWER WIRING	*CH	CRANKCASE HEATER
—	FACTORY CONTROL WIRING	COMP	COMPRESSOR
- - -	FIELD CONTROL WIRING	CONT	CONTACTOR
====	CONDUCTOR ON CIRCUIT BOARD	CB	CIRCUIT BOARD
○	COMPONENT CONNECTION	DFT	DEFROST THERMOSTAT
—	1/4-INCH QUICK CONNECT	DR	DEFROST RELAY AND CIRCUITRY
■	TERMINALS	*DTS	DISCHARGE TEMP. SWITCH
—	FIELD SPLICE	*HPS	HIGH PRESSURE SWITCH
—	JUNCTION	*LPS	LOW PRESSURE SWITCH
		OFM	OUTDOOR FAN MOTOR
		RVS	REVERSING VALVE SOLENOID

* MAY BE FACTORY OR FIELD INSTALLED.

- Compressor damage may occur if system is over charged.
 - This unit is factory charged with R-22 in accordance with the amount shown on the rating plate. The charge is adequate for most systems using matched coils and tubing not over 15 feet long. The best performance will be achieved when the unit operates with a suction gas superheat at the compressor inlet of 5 °F at normal rating conditions of the air conditioning and refrigeration institute (ARI). This chart may be used to approximate the charge if ARI rating conditions cannot be obtained. ARI rating conditions are equivalent to DOE test "A" conditions. See product data literature for required indoor air flow rates and for use of line lengths over 15 Ft.
 - Carefully relieve refrigerant pressure within this unit before final disposal.
- #### -NOTES-
- Compressor and fan motor furnished with inherent thermal protection.
 - To be wired in accordance with National Electric Code (N.E.C.) and local codes.
 - N.E.C. class 2, 24 V circuit, min. 40 VA required.
 - Use copper conductors only, from disconnect to unit.
 - Must use thermostat and sub-base as stated in pre-sale literature.
 - If indoor section has a transformer with a grounded secondary, connect the grounded side to "C" on the circuit board.
 - If any of the original wire, as supplied, must be replaced, use the same or equivalent wire.
 - Check all electrical connections inside control box for tightness.
 - Do not attempt to operate unit until service valves have been opened.
 - When DTS, LPS and HPS are not required, a jumper will be installed between Y and T1 on the defrost board.
 - It is imperative to connect 3Ø field power to unit with correct phasing. Wrong phasing will cause reverse rotation of scroll compressor which will result in reduced current draw, elevated noise level and improper operation. If rotation is reversed, simply interchange any two of the three power connections on the field side.
 - Use conductors suitable for at least 75°C (167°F).
- 324460-101 REV. A

**Fig. 3-38YC(C,W)030 (50), 036 (50-53), 042 (50-54), 048 (50-52), 060 (50-52)
208/230V, 3 Phase, 60 Hz**

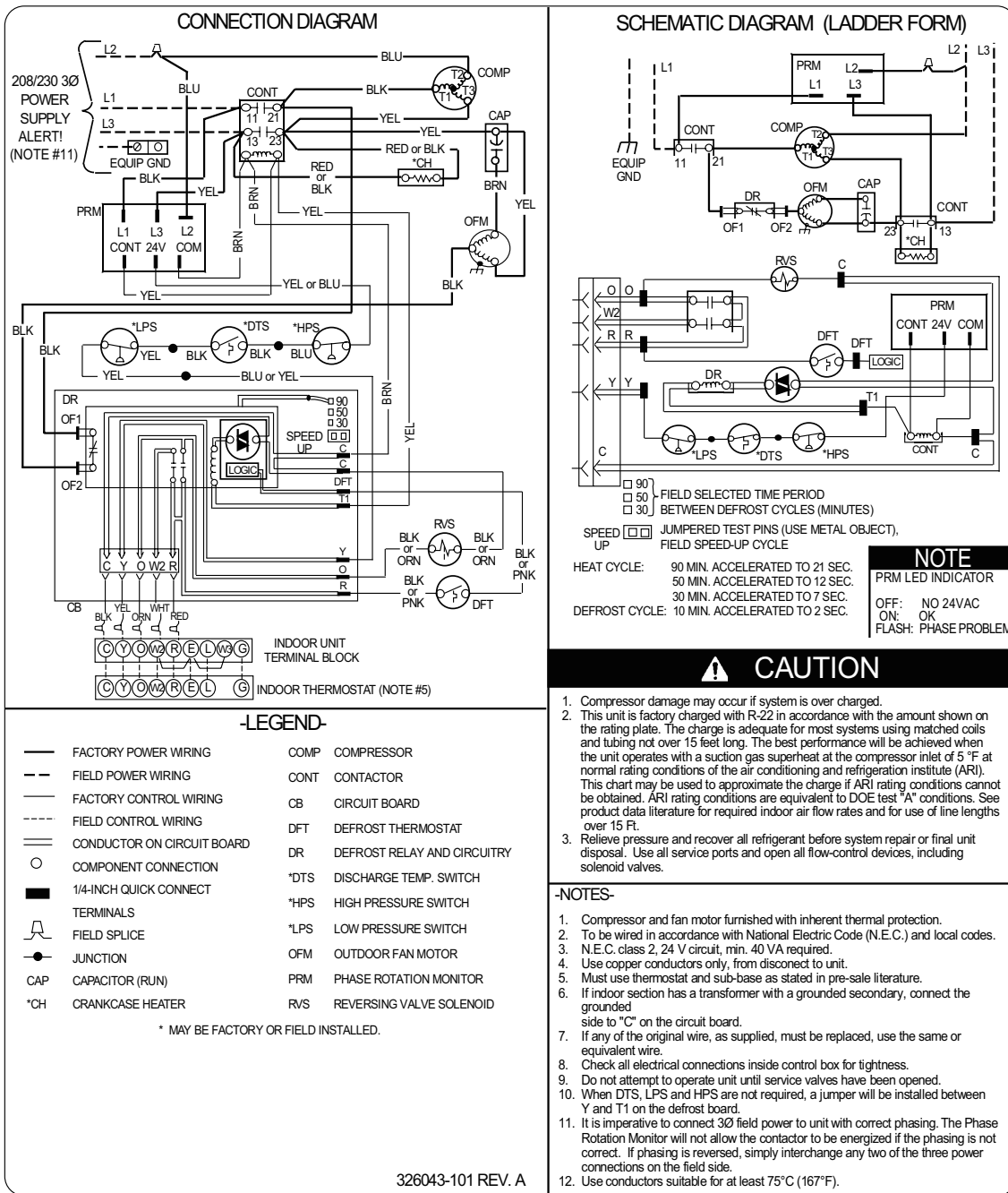


Fig. 4—38YCC036 54), 042 (55,56), 048—060 (53,54), and 38YCG 036 (53), 048—060 (53,54) 208/230V, 3 Phase, 60 Hz

A00045

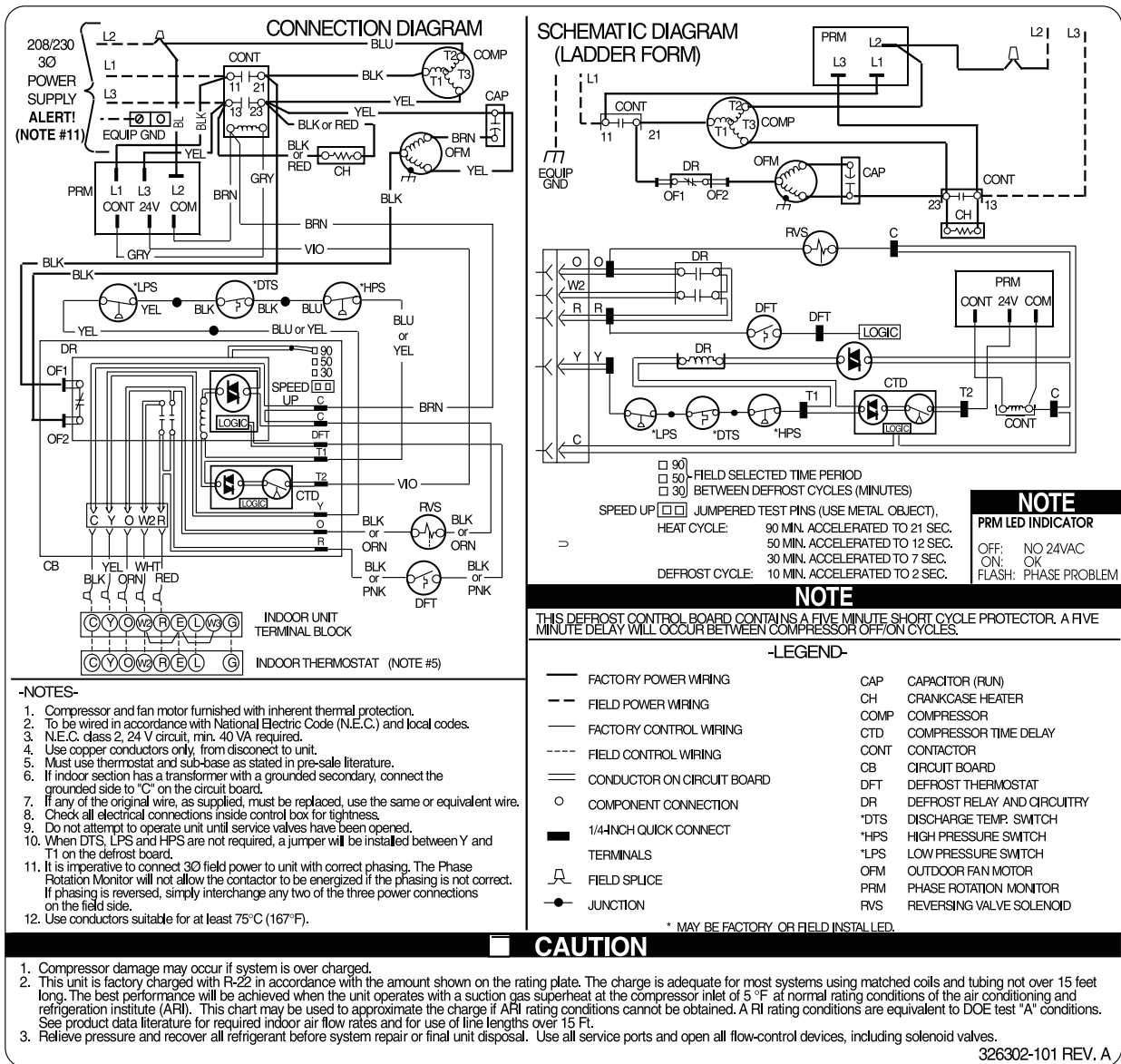


Fig. 5-38YCW036 (54), 042 (55), 048-06 (53), 208/230V, 3 Phase, 60 Hz

A01478

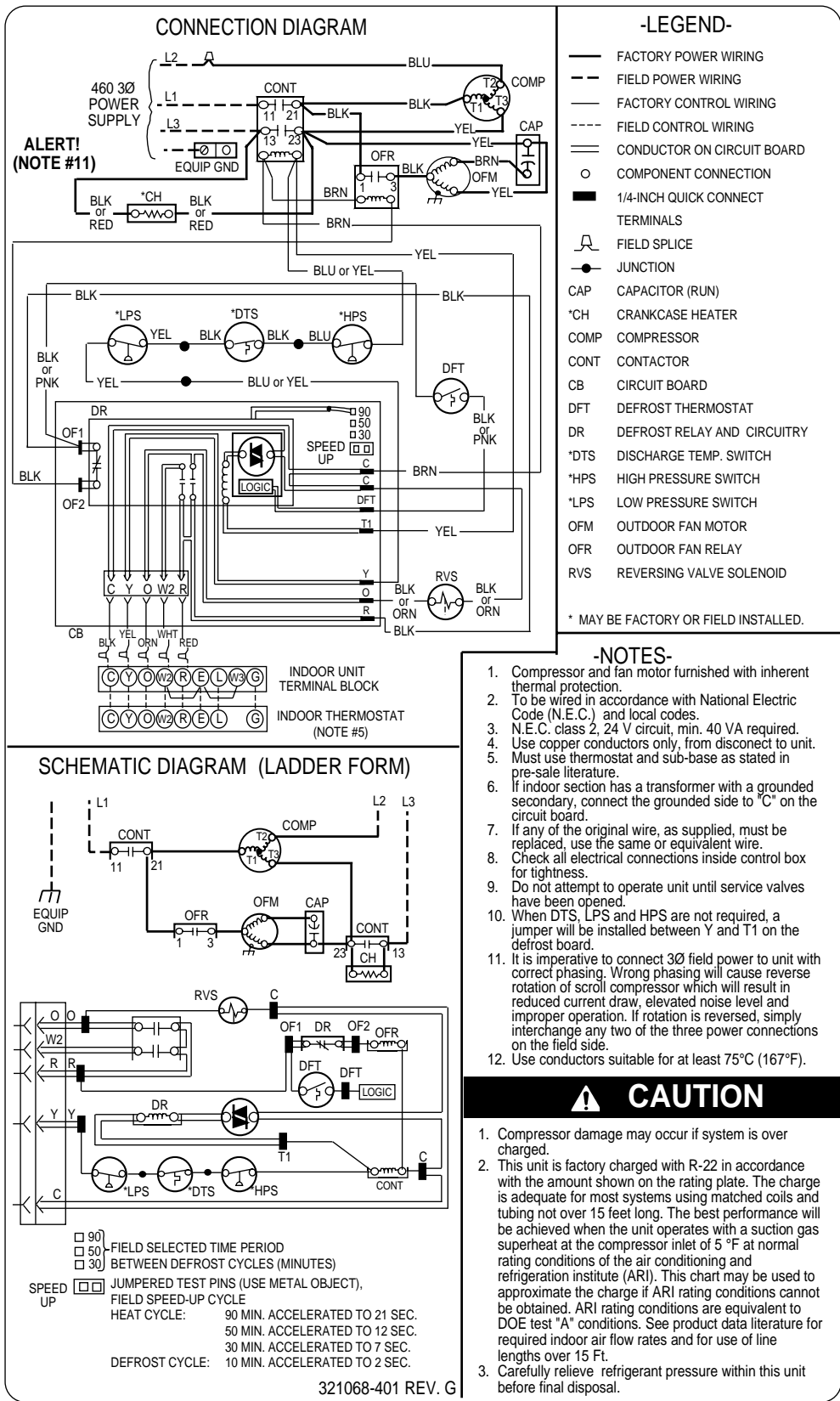


Fig. 6-38YCC036 (63), 042 (63,64), 048 (60-62), 060 (60-62), 460V, 3 Phase, 60 Hz

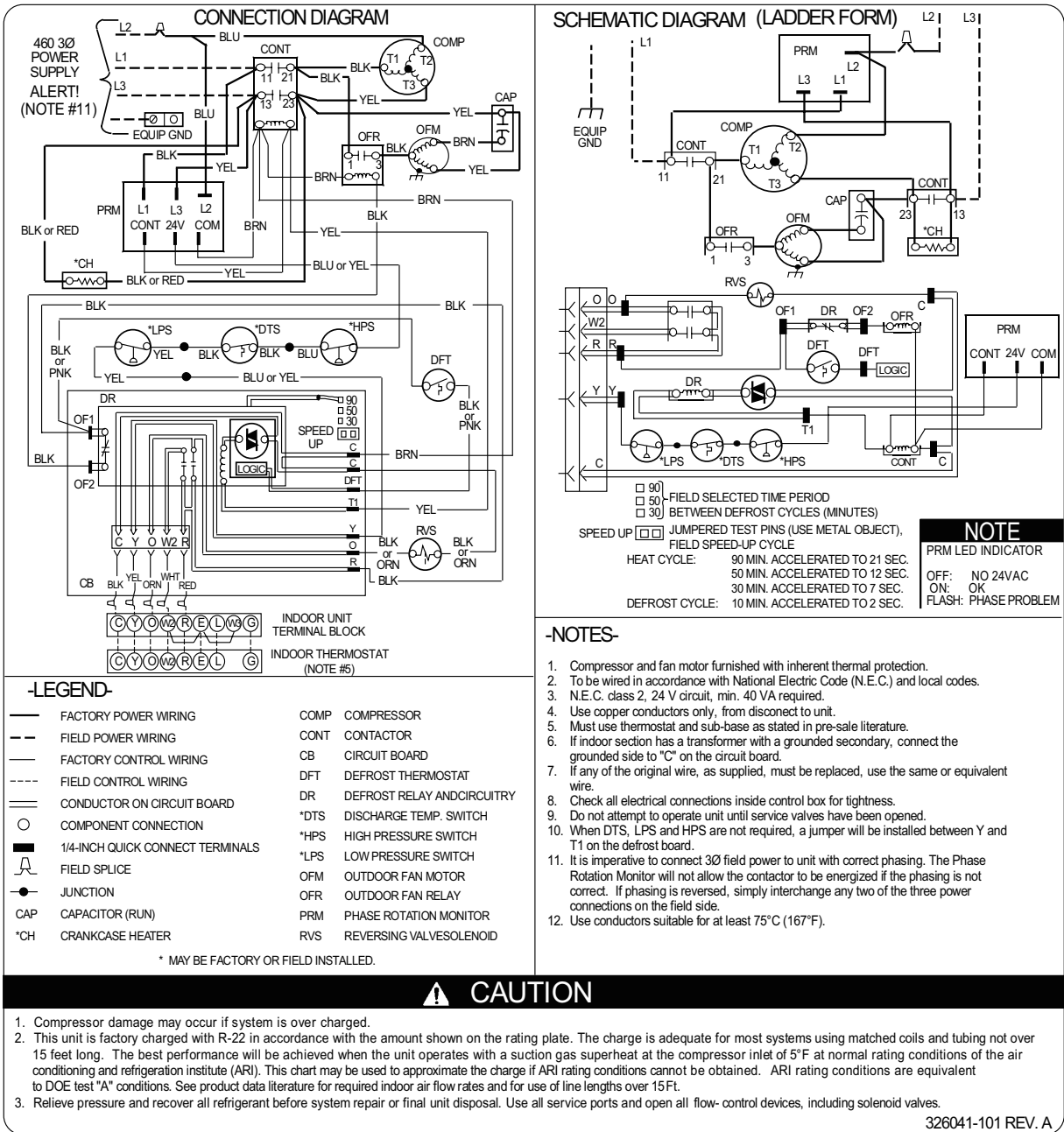


Fig. 7—38YCC036 (64), 042 (65,66), 048-060 (63,64), and 38YCG036 (63), 048-060 (63,64), 460V, 3 Phase, 60 Hz

Manufacturer reserves the right to discontinue, or change at any time, specifications or designs without notice and without incurring obligations.