



# CASSETTE ALPINE

40 G K X

**THE ULTIMATE  
IN COMFORT**



# QUIET COMFORT



- The centrifugal fan with Carrier patented wing shaped blades



The new Alpine cassette is very quiet. Its exclusive centrifugal fan design, with patented wing shaped blades and improved air flow, considerably reduces operating noise levels of the Alpine 40GKX when compared with the previous model (5 dBA reduction).

# CUSTOMISED CONTROL

A wide choice of Carrier controls is available for the Alpine 40GKX, all equipped with LCD display.



## INFRARED REMOTE CONTROL

The Infrared remote control permits adjustment of all unit functions.

Its main characteristics are:

- no installation required
- convenient and simple to use
- 24-hours programming (equipped with power failure restart)
- selectable operating modes
- selectable fan speed: high, medium, low or automatic
- selectable air distribution mode: choice of six fixed positions, continuous air sweep or automatic positioning.

## ROOM CONTROLLER



The Room Controller, the smallest of the family, is the perfect solution for applications where ease of use is the main requirement.

Its main features are:

- controls one indoor unit
- wall mounted
- selectable operating mode and fan speed
- integrated room temperature sensor.

## GROUP CONTROLLER



The Group Controller features the same functions as the Room Controller plus:

- controls up to six different indoor units (with the same operating parameters)

- 24 hours timer together with "Energy Saving" setback function.

## ZONE MANAGER



The Zone Manager controls up to 32 indoor units in 8 totally independent zones. It offers the same features as the Group Controller plus:

- weekly programming with four start/stop individual ranges per day for each zone
- individual temperature setting for each zone
- individual operating mode and fan speed selection for each zone
- individual air distribution

mode selection for each zone

- holiday function and "Smart Start"
  - installation diagnostics.
- In a system controlled by a Zone Manager, either the infrared remote control or the Group Controller can be used as local control. Each individual unit can be temporarily overridden by an Infrared remote control or by a Group Controller, without affecting the general programming of the Zone Manager.

Important note: the installation and associated configuration of a system using a Zone Manager requires either an Infrared remote control or a Group Controller.

# THE NEW COMFORT GENERATION

With the new Alpine 40GKX cassette, Carrier offers an ideal solution for the air conditioning of commercial buildings.

Thanks to its advanced design, incorporating re-designed components and innovative materials, the 40GKX offers higher performance at even lower sound levels than its successful predecessor. Carrier Alpine maintains the benefit of combining a unique compact design (600 x 600 mm for models 012 to 024) with an integrated control box for simplified installation and motorised louvers for optimum comfort.

The new 40GKX Alpine is now available in seven cooling capacities, ranging from 3 to 13.2 kW, all offered in a unified cooling only or heat pump version. All models are also available with electric resistance heater, for enhanced heating capacity.

Designed to be used with infrared remote control or a series of wall-mounted wired controls, Alpine offers exceptional comfort and extremely efficient operation.

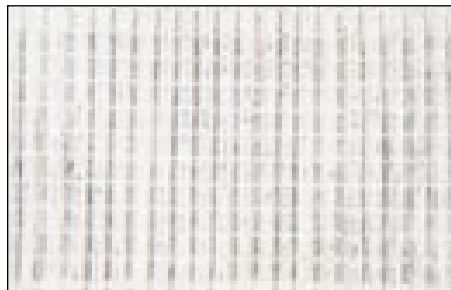


• Alpine 40GKX

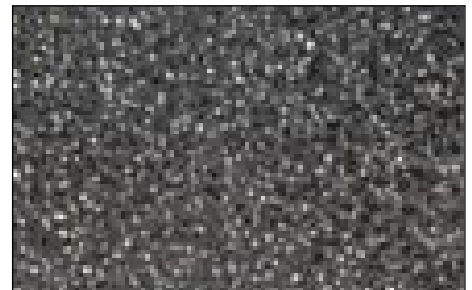
## HIGHEST INDOOR AIR QUALITY

The new Alpine 40GKX features extremely efficient filtering. Generously sized high-performance washable filters, with high particle retention capacities, are supplied as standard.

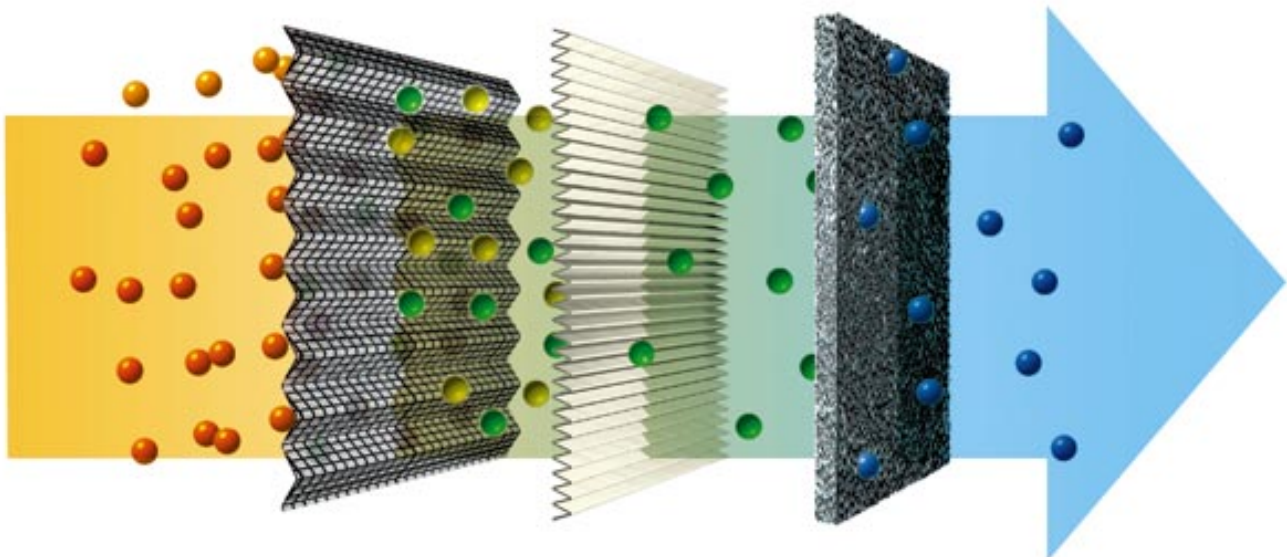
To further enhance the filtering capacity, an electrostatic filter (dust, pollen, bacteria) and an activated charcoal filter (smoke, odours) are available as optional extras.



• Electrostatic filter.



• Activated charcoal filter.



• The combined effect of high performance washable filter, electrostatic filter and activated charcoal filter removes undesirable particles and combats smoke and odours.

# FLEXIBLE AND OPTIMISED AIR DISTRIBUTION

The pleasing new grille profile, designed and patented by Carrier, permits increased air throws without creating draughts for the occupants.

This exclusive technology is combined with motorised louvers which offer six selectable air flow directions, continuous air sweep or automatic positioning.

The return air is filtered at the centre of the grille and can be distributed on four, three or two sides.

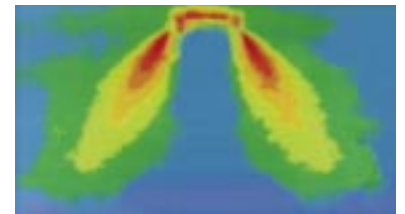
By limiting the air distribution to three sides, it is possible to add a branch duct and second outlet grille to air condition an adjoining room.



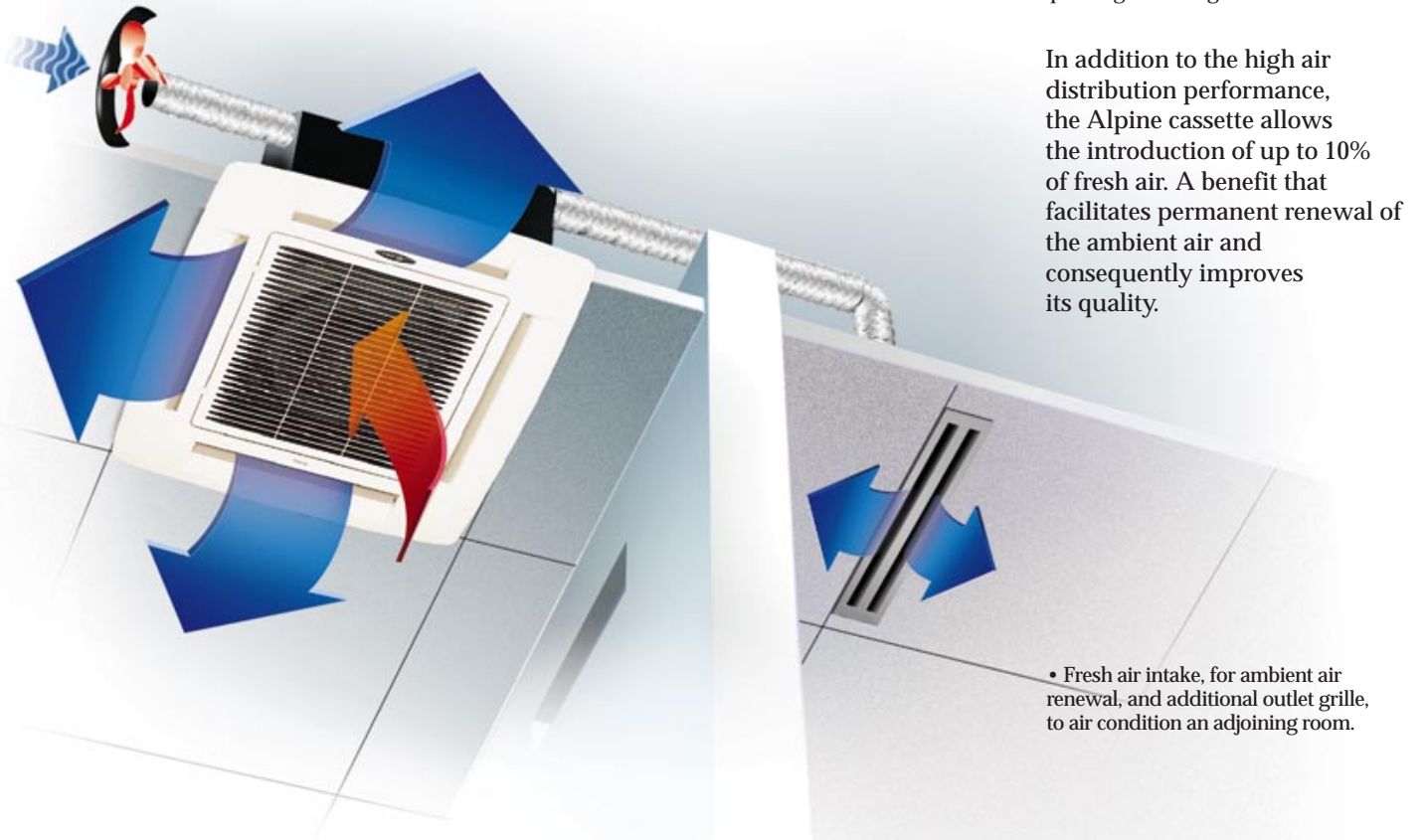
• Motorised air louvers for improved air distribution.



• The new Carrier diffuser profile offers an exceptionally long horizontal air throw, providing better distribution of the conditioned air.



• The automatic louver conditioned positioning mode, automatically selects vertical air throw when the unit is operating in heating.



In addition to the high air distribution performance, the Alpine cassette allows the introduction of up to 10% of fresh air. A benefit that facilitates permanent renewal of the ambient air and consequently improves its quality.

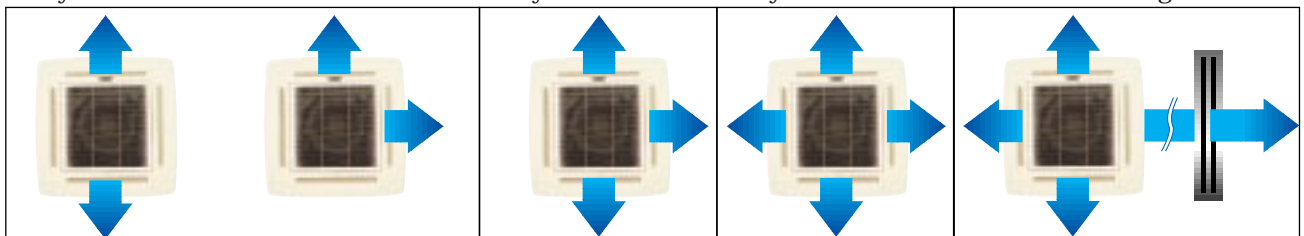
• Fresh air intake, for ambient air renewal, and additional outlet grille, to air condition an adjoining room.

2 ways

3 ways

4 ways

Additional outlet grille

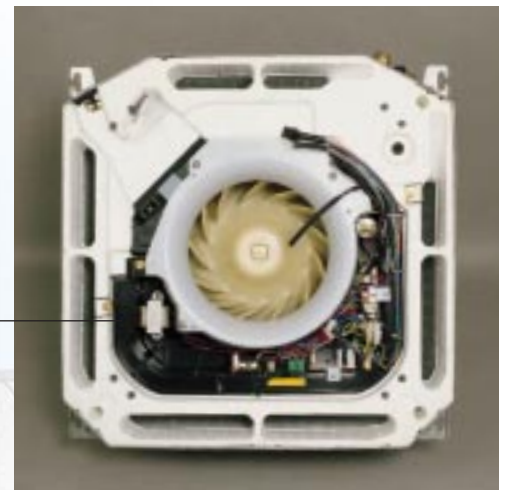
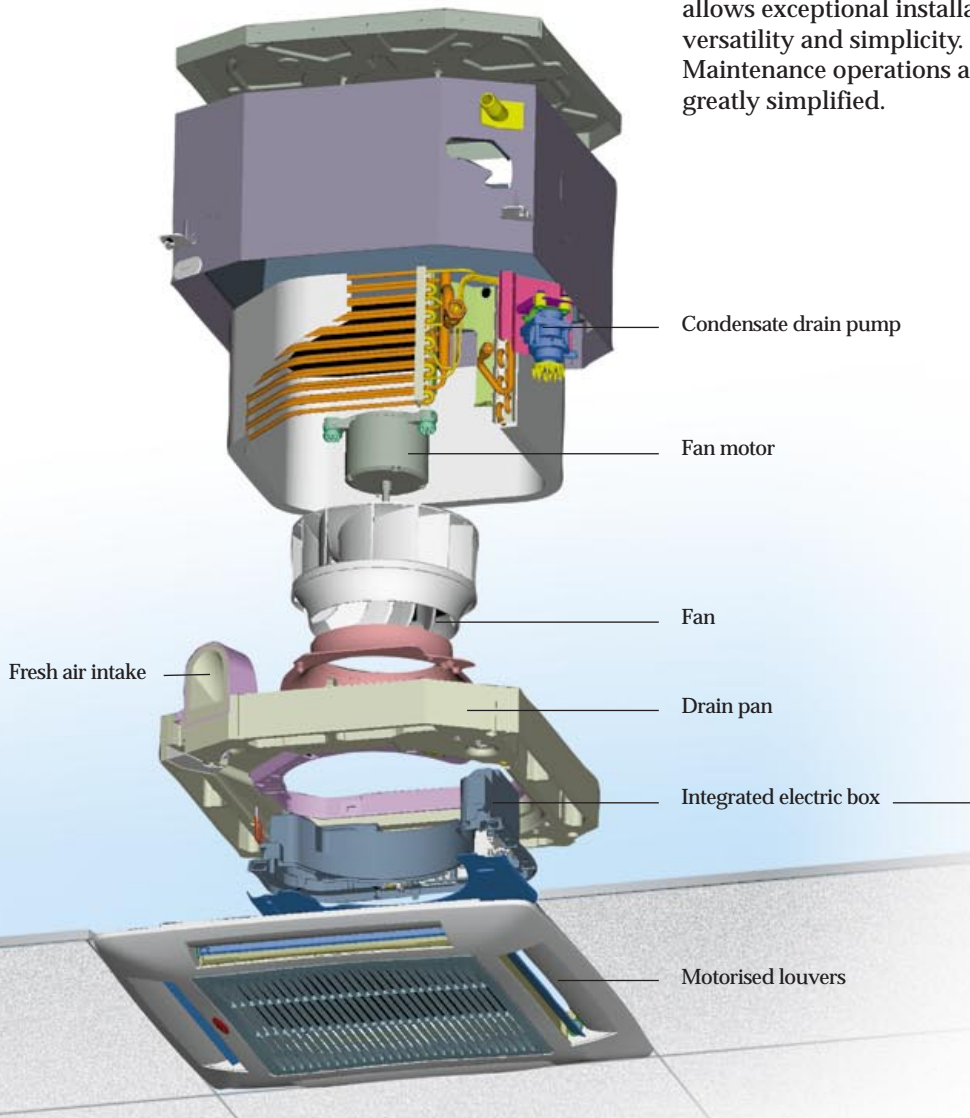


# SIMPLIFIED INSTALLATION AND MAINTENANCE

The 40GKX Alpine cassette allows exceptional installation versatility and simplicity. Maintenance operations are also greatly simplified.

Installation is simplified because of the following characteristics:

- integrated control box for improved installation times
- weight reduced by 25% and lighter grille for easy handling
- very low profile (298 mm)
- new high performance condensate removal pump with 50 cm lift.



Carrier Alpine 40GKX allows excellent maintenance accessibility to all components by simply removing the grille. The grille is easily removable and washable.



• 38GL/YL series.



## A COMPLETE RANGE OF CONDENSING UNITS

The Alpine cassette is compatible with the high-performance condensing unit 38GL/YL, one of the most compact and reliable units on the market. These are available in a wide choice of single and multisplit models.

A full range of R-410A units, the 38GLS, is also available: these units are the first in Europe to operate on PURON refrigerant which contains no CFCs or HCFCs and is totally harmless to the ozone layer.

# TECHNICAL DATA

**NEW PURON  
HEAT PUMP  
OUTDOOR UNITS**

## RANGE MATCHING



SIZES

012

018

024

028

036

048

060

40GKX "Alpine"

012

018

024

028

036

048

060

Sizes 012 to 024



Sizes 028 to 060



### ALPINE 40 GKX

| ▶ Indoor Unit                                    | 40 GKX 012            | 40 GKX 018  | 40 GKX 024  | 40 GKX 018            | 40 GKX 024  | 40 GKX 028  | 40 GKX 036  | 40 GKX 048  | 40 GKX 060  |
|--|-----------------------|-------------|-------------|-----------------------|-------------|-------------|-------------|-------------|-------------|
| ▶ Indoor Unit with Electric Heater               | 40 GKX 112            | 40 GKX 118  | 40 GKX 124  | 40 GKX 118            | 40 GKX 124  | 40 GKX 128  | 40 GKX 136  | 40 GKX 148  | 40 GKX 160  |
| ▶ Outdoor Unit Cooling only                      | 38 GL 012             | 38 GL 018   | 38 GL 024   | 38 GL 018             | 38 GL 024   | 38 GL 028   | 38 GL 036   | 38 GL 048   | 38 GL 060   |
| Cooling Capacity kW                              | 3.1                   | 4.9         | 6.4         | 4.9                   | 6.4         | 7.6         | 8.8         | 12.2        | 13.4        |
| Power Input W                                    | 1190                  | 1870        | 2420        | 1870                  | 2420        | 2490        | 2750        | 3870        | 4840        |
| Electric Heater kW                               | 1.5                   | 1.5 + 1.0   | 1.5 + 1.0   | 1.5 + 1.0             | 1.5 + 1.0   | 2.0 + 1.0   | 2.0 + 1.0   | 2.0 + 1.0   | 2.0 + 1.0   |
| ▶ Outdoor Unit Heat Pump                         | 38 YL 012             | 38 YL 018   | 38 YL 024   | -                     | 38 YL 024   | 38 YL 028   | 38 YL 036   | 38 YL 048   | 38 YL 060   |
| Cooling Capacity kW                              | 3.1                   | 4.7         | 6.0         | -                     | 6.0         | 7.3         | 8.5         | 11.7        | 13.2        |
| Power Input W                                    | 1260                  | 1720        | 2400        | -                     | 2400        | 2630        | 3000        | 3430        | 4660        |
| Heating Capacity kW                              | 3.3                   | 5           | 6.6         | -                     | 6.6         | 7.8         | 8.20        | 12.4        | 13.72       |
| Power Input W                                    | 1020                  | 1540        | 2500        | -                     | 2500        | 2600        | 2650        | 3730        | 4400        |
| C.O.P  | 3.2                   | 3.2         | 2.6         | -                     | 2.6         | 3.0         | 3.1         | 3.3         | 3.1         |
| Electric Heaters kW                              | 1.5                   | 1.5         | 1.5         | -                     | 1.5         | 2.0         | 2.0         | 2.0         | 2.0         |
| ▶ Dehumidification l/h                           | 0.8                   | 1.9         | 2.5         | 1.9                   | 2.5         | 3.0         | 3.5         | 4.6         | 5.2         |
| ▶ Air Flow low/medium/high fan speed l/s         | 152/167/183           | 156/175/194 | 189/213/250 | 156/175/194           | 189/213/250 | 200/250/300 | 270/305/350 | 320/390/460 | 400/470/515 |
| ▶ Sound Pressure Indoor Unit dB(A) <sup>1</sup>  | 27/31/34              | 30/33/36    | 35/38/42    | 30/33/36              | 35/38/42    | 29/32/36    | 33/36/39    | 37/42/45    | 43/46/49    |
| ▶ Sound Power Level Indoor Unit dB(A)            | 40/44/47              | 43/46/49    | 48/51/55    | 43/46/49              | 48/51/55    | 42/45/49    | 46/49/52    | 50/55/58    | 56/59/62    |
| ▶ Sound Pressure Outdoor Unit dB(A) <sup>2</sup> | 36                    | 43          | 46          | 43                    | 46          | 45          | 46          | 51          | 52          |
| ▶ Sound Power Level Outdoor Unit dB(A)           | 56                    | 63          | 66          | 63                    | 66          | 65          | 66          | 71          | 72          |
| ▶ Indoor Unit Height mm                          | 298                   | 298         | 298         | 298                   | 298         | 298         | 298         | 298         | 298         |
| Length mm  | 575                   | 575         | 575         | 575                   | 575         | 825         | 825         | 825         | 825         |
| Depth mm   | 575                   | 575         | 575         | 575                   | 575         | 825         | 825         | 825         | 825         |
| Weight kg  | 17.5                  | 19          | 19          | 19                    | 19          | 36          | 38          | 38          | 41          |
| ▶ Grille Height mm                               | 30                    | 30          | 30          | 30                    | 30          | 30          | 30          | 30          | 30          |
| Length mm  | 720                   | 720         | 720         | 720                   | 720         | 960         | 960         | 960         | 960         |
| Depth mm   | 720                   | 720         | 720         | 720                   | 720         | 960         | 960         | 960         | 960         |
| Weight kg  | 2.5                   | 2.5         | 2.5         | 2.5                   | 2.5         | 5           | 5           | 5           | 5           |
| ▶ Outdoor Unit 38 GL/38YL Height mm              | 504/590               | 590/590     | 590/590     | 590                   | 590/590     | 803         | 803         | 1264        | 1264        |
| Length mm  | 660/660               | 800/800     | 800/800     | 800                   | 800/800     | 800         | 800         | 800         | 800         |
| Depth mm   | 220/220               | 300/300     | 300/300     | 300                   | 300/300     | 300         | 300         | 300         | 300         |
| Weight kg  | 32/36                 | 45/47       | 51/54       | 45                    | 51/54       | 65/67       | 65/67       | 92/95       | 94/97       |
| ▶ Max Pipe Length m                              | 15                    | 20          | 25          | 30                    | 30          | 40          | 50          | 50          | 50          |
| ▶ Max Vertical Differential m                    | 5                     | 8           | 10          | 20                    | 20          | 25          | 30          | 30          | 30          |
| ▶ Flare Connections                              | 1/2" x 1/4"           | 1/2" x 1/4" | 5/8" x 1/4" | 1/2" x 1/4"           | 5/8" x 1/4" | 5/8" x 1/4" | 3/4" x 3/8" | 3/4" x 3/8" | 3/4" x 3/8" |
| ▶ Power Supply V - ph - Hz Indoor/Outdoor        | ← 230-150 / 230-150 → |             |             | ← 230-150 / 400-350 → |             |             |             |             |             |

<sup>1</sup> Low/medium/high fan speed.

Sound Pressure level in partially anechoic environment (JIS Std), 1.4 m distance from false ceiling.

<sup>2</sup> Sound Pressure level measured in hemispheric field, at 4m distance from the unit.

Also matchable with the Global CDU Puron range. For further information, please refer to the brochure specially dedicated to the Global CDU Puron range.



RLCIDP039AI 02/2001

Manufacturer reserves the right to change any product specifications without notice.  
Printed in France on Elemental Chlorine Free Paper.



A member of the United Technologies Corporation family