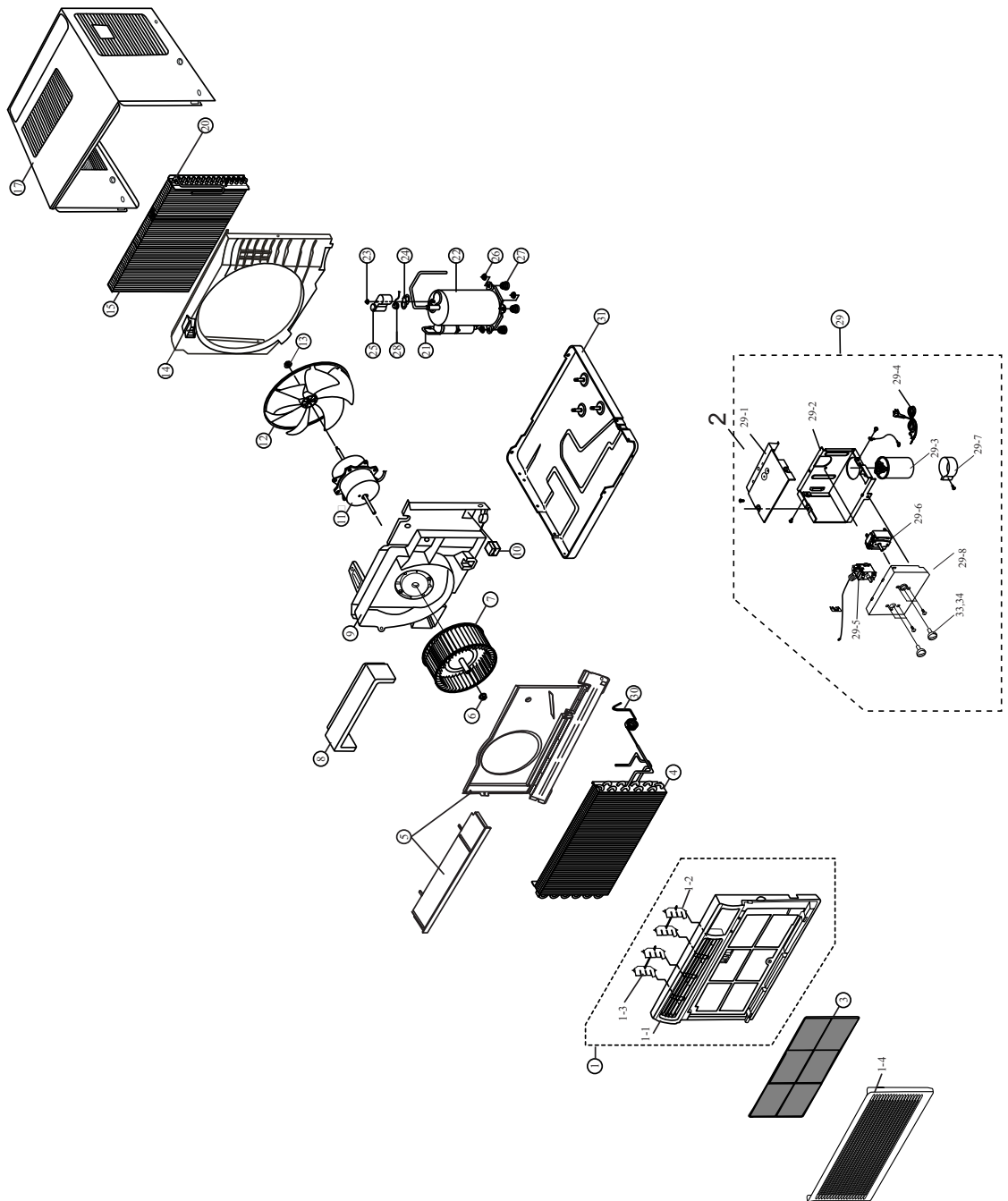


6. Exploded View and Parts List

6-1 Main unit

EXPLODED VIEW



Exploded View and Parts List

■Part List

No	Description	Code No.	Specification	QTY			
				AW05M0YEA	AW05M0YEB	AW05M0YBA	AW05J0YAA
1	ASSY PANEL FRONT	DB92-00394A	ASSY,TOP,SEA	1	1	1	1
1-1	PANEL FRONT	DB64-00759A	HIPS,T2	1	1	1	1
1-2	BLADE V	DB66-00367A	HIPS,T2.0	4	4	4	4
1-3	LINK BLADE	DB66-00368A	PP,L82,T1.3	2	2	2	2
1-4	GRILLE AIR INLET	DB64-00681A	HIPS,T2	1	1	1	1
2	CASE CONTROL UP	DB61-00933A	SGCC-M,T0.7	1	1	1	1
3	FILTER	DB63-00600A	HIPS,T2.5	1	1	1	1
4	EVAPORATOR	DB96-01972A	2R×10S,FP1.3	1	1	1	1
5	ASSY-PLATE EVAP CASING	DB90-00898A	ASSY	1	1	1	1
6	NUT-FRANGE	DB60-30004A	2C M6 SM20C NTR	1	1	1	1
7	BLOWER	DB67-00099A	ABS,-,OK_TOP-P/J	1	1	1	1
8	ASSY-EVAP CASE UP	DB90-00944A	25FO-PS	1	1	1	1
9	PLATE-PARTITION	DB70-00219A	ABS,-,T2.5	1	1	1	1
10	INSULATION-TUBE	DB72-50178A	T30,W36,L34,NBR	1	1	1	1
11	MOTOR	DB31-00035N	YGN50-4L	1	1	-	-
		DB31-00210A	YGN50-6S	-	-	1	-
		DB31-00035J	YGN50-6K(M)	-	-	-	1
12	FAN-PROPELLER	DB67-00014A	ABS,290,OK-PJT	1	1	1	1
13	NUT-FRANGE	DB60-30020A	M6,LEFT	1	1	1	1
14	CASE COND	DB61-00932A	复合PP,T2,W378,L308	1	1	1	1
15	ASSY-COND	DB96-02362A	1R×16S,FP1.4	1	-	-	-
		DB96-02362B	1R×16S,FP1.2	-	1	-	-
		DB96-02924A	2R×16S	-	-	1	-
		DB96-01946A	1R×15S	-	-	-	1
17	ASSY CABINET	DB90-00912B	Y-PJT, TOP	1	1	1	1
20	TUBE DISCHARGE	DB62-01476A	PI5.0,C1220T-0	1	1	-	-
		DB62-01426A	PI5.0,C1220T-0	-	-	1	-
		DB62-01313A	PI7.0,C1220T-0	-	-	-	1
21	TUBE SUCTION	DB62-01314A	C1220T-0	-	-	1	1
		DB62-01314B	C1220T-0	1	1	-	-
22	COMPRESSOR	39A052JS1KA	1Ph,220~240V,50Hz	1	-	-	-
		39A052JSAKA	1Ph,220~240V,50Hz	-	1	-	-
		39A052ISAKA	1Ph,220,60Hz	-	-	1	-
		39A050HS1KA	1Ph,115,60Hz	-	-	-	1
23	NUT-TERMINAL COVER	DB60-30001A	M5,-,SM20C	1	1	1	1
24	GASKET	DB63-20003A	EPDM,T0.8	1	1	1	1
25	COVER-TERMINAL	DB63-10026A	GE,-,NORYL,-,SEI-701	1	1	1	1
26	NUT WASHER	DB60-30028A	M8,ZPC	3	3	3	3
27	GROMMET-ISOLATOR	DB73-00016A	EPDM,-,BLK,OK-PJT	3	3	3	3
28	O.L.P	DB35-00006D	MRA12100-12008	1	-	-	-
		DB35-00022G	KA-122-LYDN59B	-	1	-	-
		DB35-00022E	KA-122-LYGN59B	-	-	1	-
		DB35-00006F		-	-	-	1
29	ASSY CONTROL BOX	DB93-01617E	5K,MECH	1	1	-	-
		DB93-01617D	5K,MECH	-	-	1	-
		DB93-01617A	5K,MECH	-	-	-	1
29-1	CASE CONTROL UP	DB61-00933A	SGCC-M,T0.7	1	1	1	1
29-2	CASE CONTROL LOW	DB61-00934A	SGCC-M,T0.7	1	1	1	1
29-3	C-OIL	2501-001125	1.5/20μF,450VAC	1	1	-	-
		2501-001160	1.5/15μF,450VAC	-	-	1	-
		2501-001290	3.5/35UF,270VAC	-	-	-	1
29-4	THERMOSTAT	DB47-20074D	MOLD CAM,OK-P/J	1	1	1	1
29-5	SWITCH-ROTARY	3406-001045	240V,25A,6P	1	1	1	1
29-6	POWER CORD	DB39-00346A	125V,15,AWG18	1	1	-	-
		DB39-10032S	TANDEM,250V	-	-	1	-
		DB39-00343G	125V,AWG18	-	-	-	1
29-7	CLIP-CAPACITOR	DB65-00031A	SGCC-M,T0.45	1	1	1	1
29-8	PANEL CONTROL	DB64-00758A	ABS,T2.0	1	1	1	1
30	TUBE CAPILLARY	DB62-01315A	C1220T-H	1	-	-	1
		DB62-02153A	ID1.2×L1100	-	1	-	-
		DB62-02194A	ID1.2×L1200	-	-	1	-
31	ASSY BASE	DB90-00897A	MSWR10,M8,L10	1	1	1	1
33	KNOB-THERMO ASSY	DB64-00838A	ABS	1	1	1	1
34	KNOB-THERMO ASSY	DB64-00838B	ABS	1	1	1	1

Exploded View and Parts List

■Part List

No	Description	Code No.	Specification	Q'TY		
				AW05M0YAF	AW05M0YAG	REMARK
1	ASSY PANEL FRONT	DB92-00394A	ASSY, TOP, SEA	1	1	
1-1	PANEL FRONT	DB64-00759A	HIPS, T2	1	1	
1-2	BLADE V	DB66-00367A	HIPS, T2.0	4	4	
1-3	LINK BLADE	DB66-00368A	PP, L82, T1.3	2	2	
1-4	GRILLE AIR INLET	DB64-00681A	HIPS, T2	1	1	
2	CASE CONTROL UP	DB61-00933A	SGCC-M, T0.7	1	1	
3	FILTER	DB63-00600A	HIPS, T2.5	1	1	
4	EVAPORATOR	DB96-01972A	2R×10S, FP1.3	1	1	
5	ASSY-PLATE EVAP CASING	DB90-00898A	ASSY	1	1	
6	NUT-FRANGE	DB60-30004A	2C M6 SM20C NTR	1	1	
7	BLOWER	DB67-00099A	ABS, -, OK_TOP-P/J	1	1	
8	ASSY-EVAP CASE UP	DB90-00944A	25FO-PS	1	1	
9	PLATE-PARTITION	DB70-00219A	ABS, -, T2.5	1	1	
10	INSULATION-TUBE	DB72-50178A	T30, W36, L34, NBR	1	1	
11	MOTOR	DB31-00035Q	YGN50-6K	1	1	
12	FAN-PROPELLER	DB67-00014A	ABS, 290, OK-PJT	1	1	
13	NUT-FRANGE	DB60-30020A	M6, LEFT	1	1	
14	CASE COND	DB61-00932A	复合PP, T2, W378, L308	1	1	
15	ASSY-COND	DB96-02044B	2R×15S	1	1	
17	ASSY CABINET	DB90-00912B	Y-PJT, TOP	1	1	
20	TUBE DISCHARGE	DB62-01349B	PI5.0, C1220T-0	-	1	
		DB62-02408B	PI5.0, C1220T-0	1	-	
21	TUBE SUCTION	DB62-01314A	C1220T-0	1	1	
22	COMPRESSOR	DB95-00490A	2R7S126BUC	1	-	
		39A050HSAKA	1Ph, 115, 60Hz	-	1	
23	NUT-TERMINAL COVER	DB60-30001A	M5, -, SM20C	1	1	
24	GASKET	DB63-00990A	EPDM, T0.8	1	-	
		DB63-00765A	EPDM, T0.8	-	1	
25	COVER-TERMINAL	DB63-01030A	GE, -, NORYL, -, SEI-701	1	-	
		DB63-00762A	GE, -, NORYL, -, SEI-701	-	1	
26	NUT WASHER	DB60-30028A	M8, ZPC	3	3	
27	GROMMET-ISOLATOR	DB63-01028A	EPDM, -, BLK, OK-PJT	3	-	
		DB63-00764A	EPDM, -, BLK, OK-PJT	-	3	
28	O.L.P	DB35-00031C	MRA99811-9201	1	-	
		DB35-00022C	KA-122-LBDN61K	-	1	
29	ASSY CONTROL BOX	DB93-02607B	5K, MECH	1	-	
		DB93-02607A	5K, MECH	-	1	
29-1	CASE CONTROL UP	DB61-00933A	SGCC-M, T0.7	1	1	
29-2	CASE CONTROL LOW	DB61-00934A	SGCC-M, T0.7	1	1	
29-3	C-OIL	2501-001290	3.5/35UF, 270VAC	1	1	
29-4	THERMOSTAT	DB47-20074D	MOLD CAM, OK-P/J	1	1	
29-5	SWITCH-ROTARY	3406-001045	240V, 25A, 6P	1	1	
29-6	POWER CORD	DB39-00343G	125V, AWG18	1	1	
29-7	CLIP-CAPACITOR	DB65-00031A	SGCC-M, T0.45	1	1	
29-8	PANEL CONTROL	DB64-00758A	ABS, T2.0	1	1	
30	TUBE CAPILLARY	DB62-02153A	ID1.2×L1100	1	1	
31	ASSY BASE	DB90-00897A	MSWR10, M8, L10	1	1	
33	KNOB-THERMO ASSY	DB64-00838A	ABS	1	1	
34	KNOB-THERMO ASSY	DB64-00838B	ABS	1	1	