

TOSHIBA

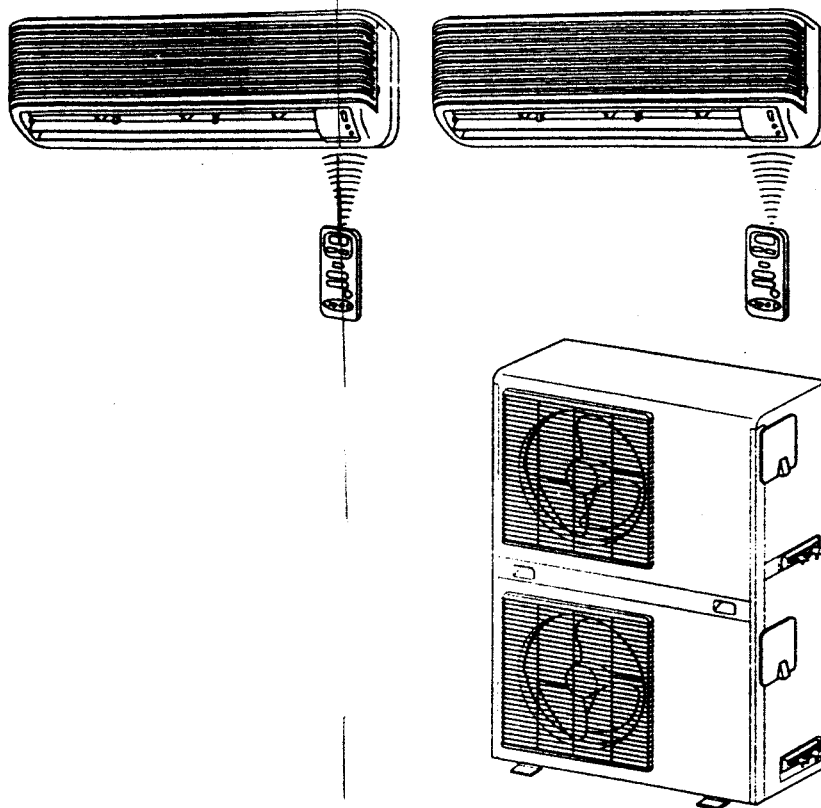
FILE NO. A03-9802
SUPPLEMENT

SERVICE MANUAL

AIR-CONDITIONER

MULTI SPLIT WALL TYPE

RAS-13SKH-E x2/RAS-M26SAH-E



CONTENTS

1. SPECIFICATIONS	4
2. CONSTRUCTION VIEWS	7
2-2. Outdoor Unit	7
10. PART REPLACEMENT	56
10-3. Outdoor Unit (RAS-M26SAH-E)	56
12. EXPLODED VIEWS AND PARTS LIST	61
12-2. Outdoor Unit	61

This supplement is prepared for similar model RAS-13SKH-E x 2 / RAS-M26SAH-E.
Be sure to refer to the service manual shown in the table below for other informations.

MODEL NAME	SERVICE MANUAL FILE No.
RAS - 13SKH - E RAS - 13SAH - E	A00 - 9627
RAS - 13SKHX RAS - 13SAHX	

SUMMARY

- The lower part RAS-13SAH-E can be used as a double decker under the combination name RAS-M26SAH-E with two indoor units RAS-13SKH-E.
- Reference pages ; 4, 7, 56 and 61

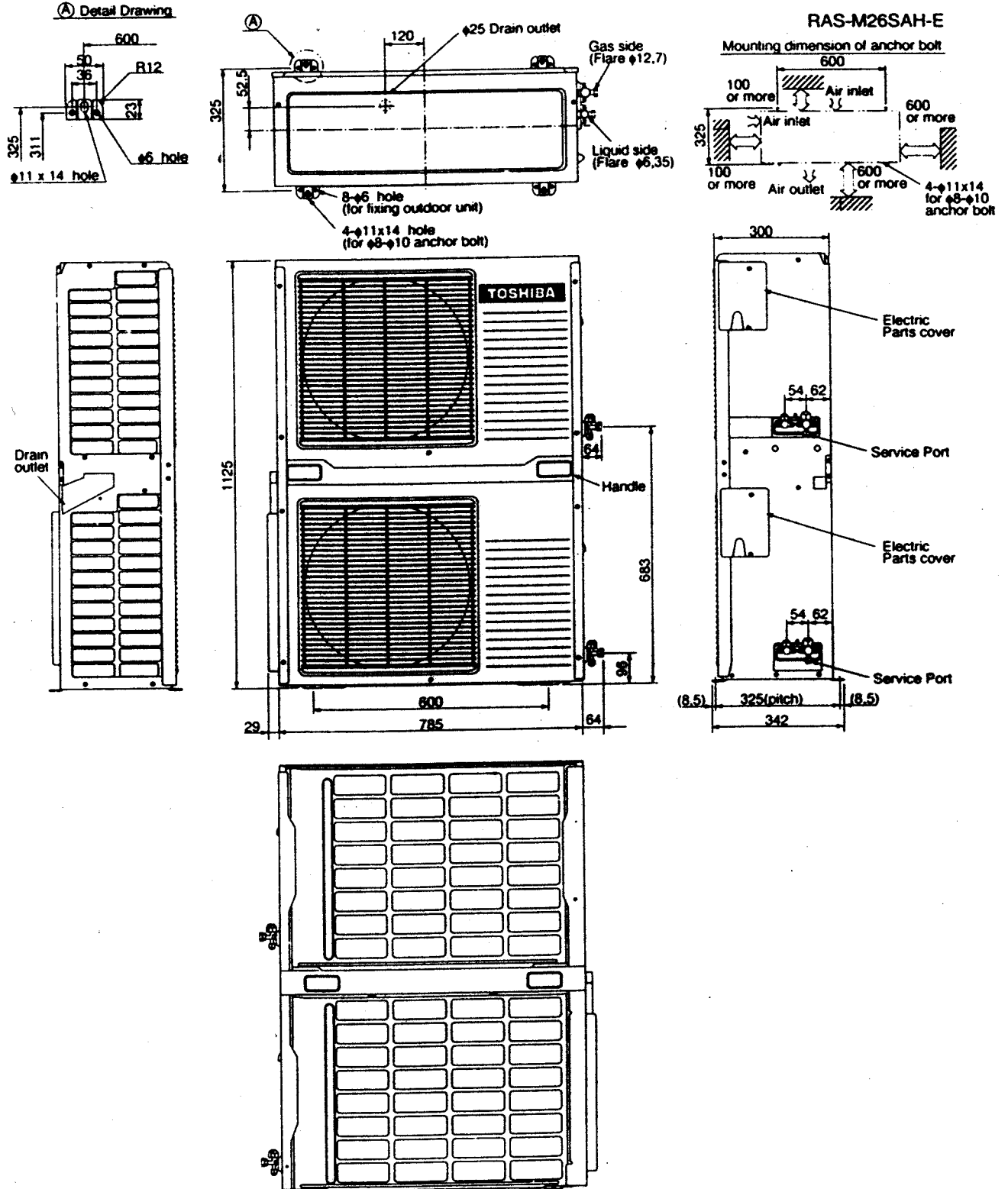
1. SPECIFICATIONS

Item		Model		RAS-13SKH-E (2 units)/RAS-M26SAH-E											
				Cooling						Heating					
				1 Indoor unit (A or B)			2 Indoor units (A + B)			1 Indoor unit (A or B)			2 Indoor units (A + B)		
Capacity	*1 kW	220V	230V	240V	220V	230V	240V	220V	230V	240V	220V	230V	240V		
		3,45	3,50	3,50	6,90	7,00	7,00	4,00	4,05	4,10	8,00	8,10	8,20		
Power source	Phase	Single													
	V	220/230/240													
	Hz	50													
Power consumption	kW	220V	230V	240V	220V	230V	240V	220V	230V	240V	220V	230V	240V		
		1,26	1,28	1,30	2,52	2,56	2,60	1,19	1,23	1,27	2,38	2,46	2,54		
Power factor	%	98	96	92	98	96	92	95	95	93	95	95	93		
Running current	A	0,15/	0,15/	0,15/	0,30/	0,30/	0,30/	0,15/	0,15/	0,15/	0,30/	0,30/	0,30/		
	Indoor/Outdoor	5,70	5,66	5,75	11,4	11,32	11,50	5,54	5,48	5,54	11,08	10,96	11,08		
Starting current	A	50 (25 x 2)													
Moisture removal	lit/h	4,0 (2,0 x 2)													
Noise	Indoor (H/M/L)	dB													
	Outdoor (220/230/240V)	dB													
		50 / 51 / 52						51 / 52 / 53							
Refrigerant	Name of refrigerant	R-22													
	Rated volume	kg													
		1,76 (0,88 x 2)													
Refrigerant control		Capillary tube													
Interconnection pipe	Gas side size	mm													
	Connection type	mm													
	Liquid side size	mm													
	Connection type	mm													
	Maximum length (One way)	m	*2												
	Maximum height difference	m	I												
	Indoor unit	6													
	Outdoor unit	m													
Condensate drain pipe	Outer diameter	mm													
		16													
INDOOR UNIT				RAS-13SKH-E											
Dimensions	Height	mm													
	Width	mm													
	Depth	mm													
Net weight	kg	8													
Evaporator type		Finned tube													
Indoor fan type		Cross flow fan													
Air volume	High fan	m ³ /h													
	Medium fan	m ³ /h													
	Low fan	m ³ /h													
		650													
		560													
		510													
Fan motor output	W	19													
Air filter		Polypropylene net filter (Washable)													
OUTDOOR UNIT				RAS-M26SAH-E											
Dimensions	Height	mm													
	Width	mm													
	Depth	mm													
Net weight	kg	92													
Condenser type		Finned tube													
Outdoor fan type		Propeller													
Airflow volume	m ³ /h	(1710 x 2)													
Fan motor output	W	28													
Compressor	Model	PH170T2-4L2 x 2													
	Output	W													
		1100 x 2													
Safety device		Fuse, Overload relay													
Auto louver		Yes													
Usable outdoor temperature range	°C	21 - 43						- 5 - 21							

Specifications are subject to change without notice.

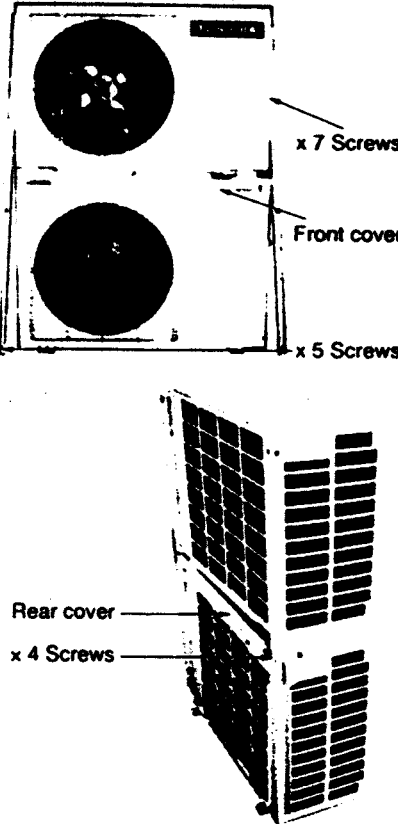
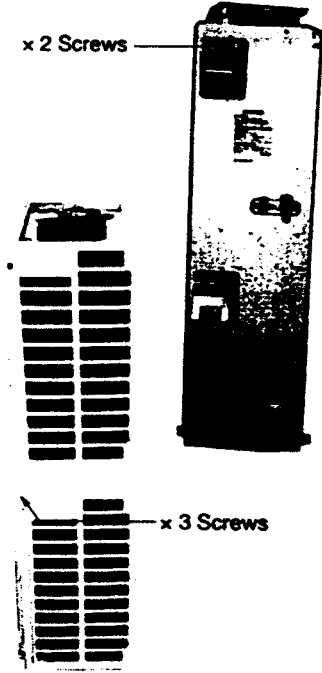
2. CONSTRUCTION VIEWS

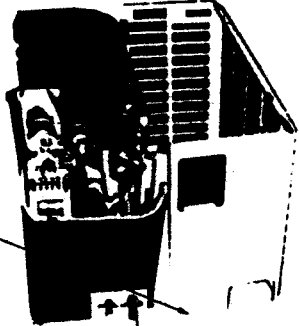
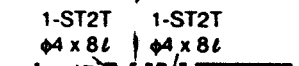


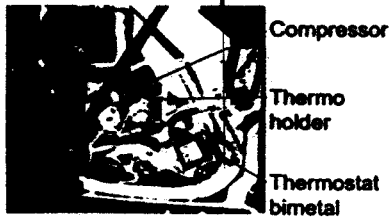
2-2. Outdoor Unit RAS-M26SAH-E



10. PART REPLACEMENT

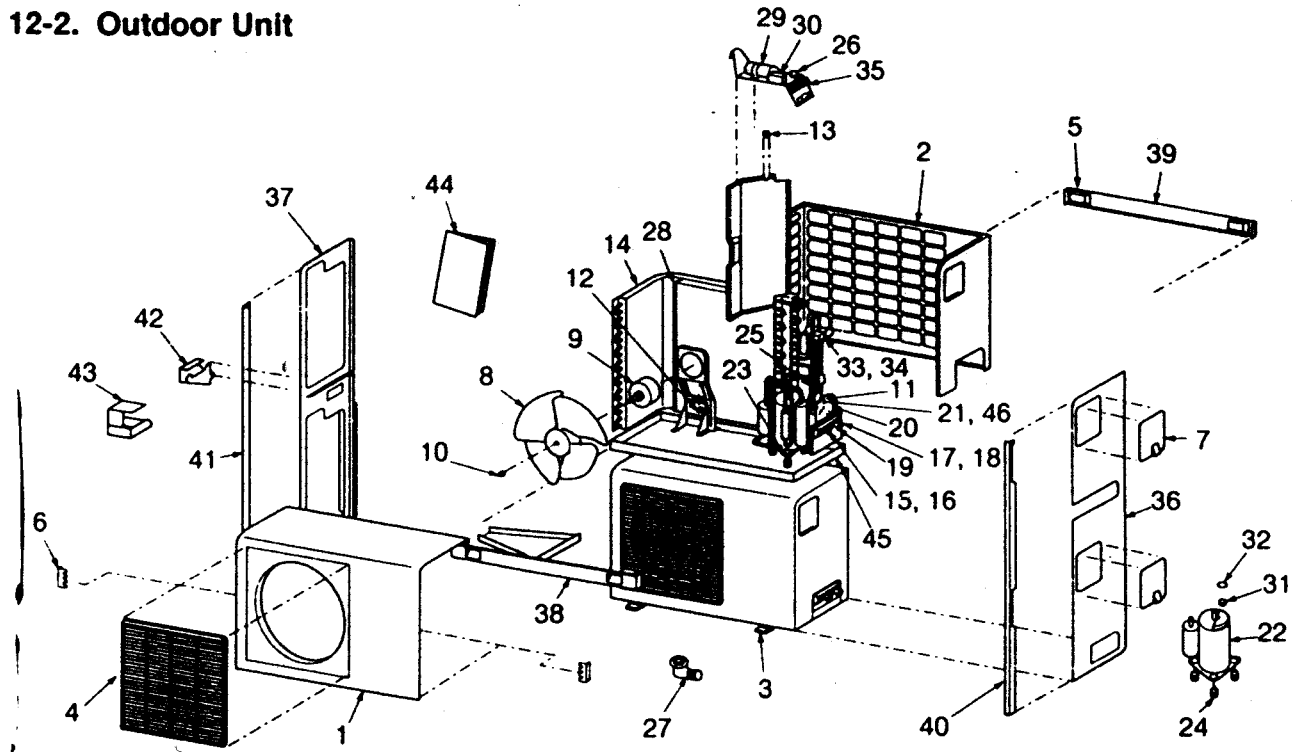
10-3. Outdoor Unit (RAS-M26SAH-E)

No.	Part name	Procedure	Remarks
①	Front panel	<ol style="list-style-type: none"> 1) After stopping the operation of the air conditioner, be sure to turn off main power supply switch and breaker of indoor unit. 2) Remove the L-shape holder (Right). (7 screws) 3) Remove the L-shape holder (Left). (5 screws) 4) Remove the front cover. 5) Remove the rear cover. (4 screws) 6) Remove the electrical parts cover. <ul style="list-style-type: none"> (Upper unit: 2 screws) (Lower unit: 2 screws) 7) Remove the cord clamps. <ul style="list-style-type: none"> (Upper unit: 2 screws) (Lower unit: 2 screws) 8) Remove the front cabinet. <ul style="list-style-type: none"> (Upper unit: 3 screws) (Lower unit: 3 screws) <ul style="list-style-type: none"> • Pull the front lower position toward you, and remove it putting out upward. 	 <p style="text-align: right;">x 7 Screws</p> <p style="text-align: right;">Front cover</p> <p style="text-align: right;">x 5 Screws</p> <p style="text-align: left;">Rear cover</p> <p style="text-align: left;">x 4 Screws</p>
②	Upper unit	<ol style="list-style-type: none"> 1) Perform the process ① above. 2) Remove the base plate (Right). (2 screws) 3) Remove the base plate (Left). (3 screws) 4) Remove the upper unit pulling it toward you. 	 <p style="text-align: right;">x 2 Screws</p> <p style="text-align: right;">x 3 Screws</p>

No.	Part name	Procedure	Remarks
②-1	Back cabinet Side cabinet	1) Remove the back cabinet and side cabinet. (4 screws)	
②-2	Capacitor for compressor	1) Perform the process ① above. 2) Remove the fixing screw securing the capacitor band. (1- ST2T $\phi 4 \times 8 \text{ l}$) 3) Remove the cable connected to the terminal.	
②-3	Capacitor for fan motor	1) Perform the process ① above. 2) Remove the fixing screw. (1- ST2T $\phi 4 \times 8 \text{ l}$) 3) Remove the cable connected to the terminal.	
②-4	Overload relay	1) Perform the process ① above. 2) Remove Fastons of leads. 3) Remove the fixing screw. (1- ST2T $\phi 4 \times 10 \text{ l}$) 4) Pull OL-Holder up and remove Overload relay from OL-Holder.	
②-5	Thermostat bimetal	1) Perform the process ① above. 2) Remove terminal cover of compressor. 3) Remove thermo holder and pull thermostat bimetal up. 4) Remove Fastons of leads.	
③	Lower unit	1) Perform the process ①, ② above. 2) Remove the base plate (Right). (3 screws) 3) Remove the drain guide. (2 screws) 4) Remove the base plate (Left). (2 screws)	
* The method of replacing parts of lower unit is the same as upper unit.			

12. EXPLODED VIEWS AND PARTS LIST

12-2. Outdoor Unit



Location No.	Part No.	Description
1	43005144	Cabinet, Front
2	43005143	Cabinet Side
3	43042446	Base
4	43T19001	Guard Fan
5	43115663	Hanger
6	43T19002	Stopper, Guard
7	43T62007	Cover, Electric Parts
8	43020302	Propeller Fan
9	43021984	Motor Fan
10	43T47001	Flange, Nut
11	43T46005	Checked Valve
12	43T63004	Lead-Wire Clamp
13	43T96001	Bushing
14	43043609	Condenser
15	43T46002	Packed Valve, 6,35
16	43T47003	Bonnet, 6,35DIA
17	43T46004	Packed Valve, 12,7
18	43T47018	Bonnet 12,7DIA
19	43047607	ASM, Packed Valve Cap 12,7, 6,35
20	43T47007	Capillary Tube 1,2DIA
21	43T47014	Capillary Tube 1,7DIA
22	43041764	Compressor, AC 220/240V, 1100W
23	43T97001	Nut

Location No.	Part No.	Description
24	43T49008	Cushion, Rubber
25	43045085	Dryer
26	43054398	Relay Over Load
27	43T79004	Nipple, Drain
28	43043810	Condenser, Sub
29	43055496	Capacitor, Plastic Film, 35MFD, 400V
30	43T55009	Capacitor, Electrolytic, EEP2H155 HQA107 1,5MF, 500V
31	43T50002	Thermostat, Bimetal CS-7 125
32	43T63005	Holder Thermostat, Bimetal
33	43146482	4-Way Valve
34	43046255	Solenoid Coil
35	43060049	Terminal Block, 5P
36	43002129	Cabinet, Side, Right
37	43002130	Cabinet, Side, Left
38	43005292	Front Panel
39	43005293	Rear Panel
40	43002131	Plate, Support, Right
41	43002132	Plate, Support, Left
42	43079243	Guide, Drain
43	43079244	Box, Drain
44	43T85028	Owner's Manual
45	43042453	Base
46	43T47017	Capillary Tube 0,6DIA

TOSHIBA CORPORATION

1-1, SHIBAURA 1-CHOME, MINATO-KU, TOKYO, 105-01, JAPAN