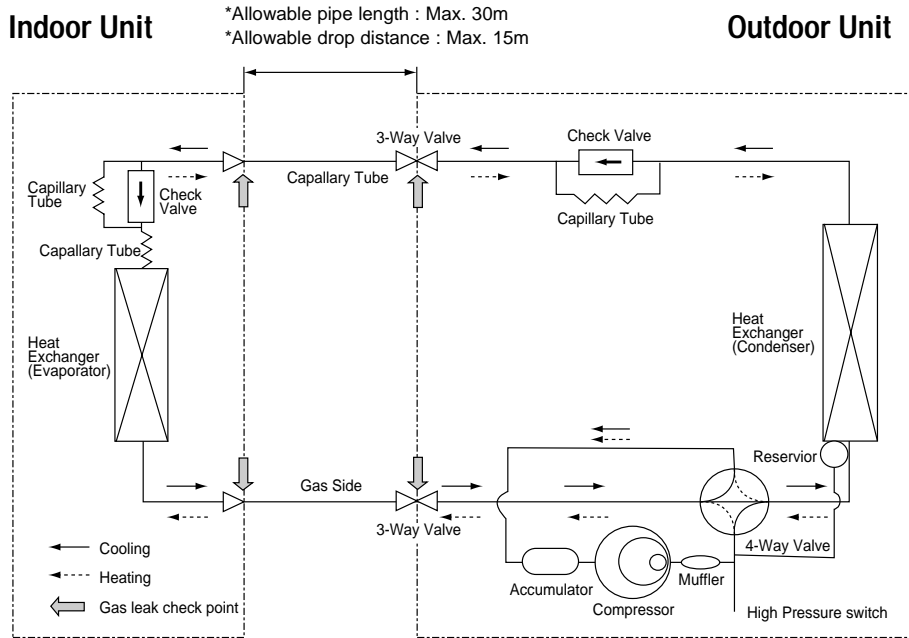


# 8. Block Diagrams

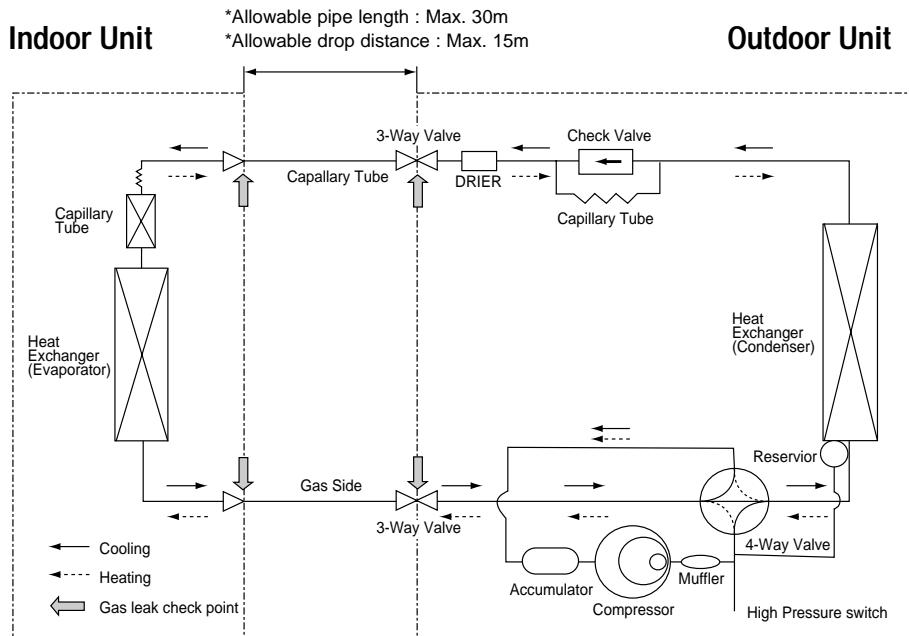
## 8-1 Refrigerating Cycle Block Diagram

•Model : ACH1800E, ACH2400E, CH18ZA, CH24ZA



\*Amount of refilling per extension length of 1m;  
When extending the pipe length by more than 5m, 40gr(50gr: Outdoor Unit is higher than Indoor Unit) of R-22 refrigerant should be refilled per extension length of 1m.

•Model : CH18CA, CH24CA



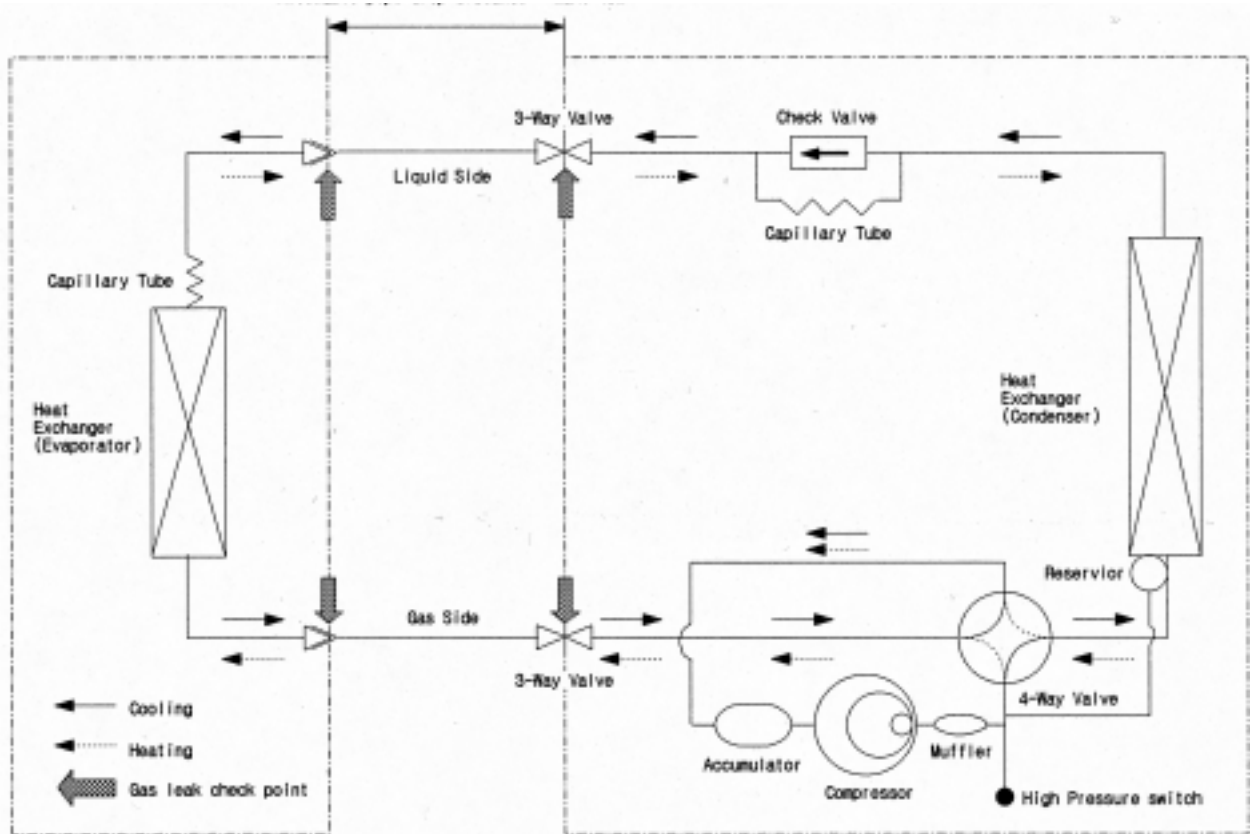
\*Amount of refilling per extension length of 1m;  
When extending the pipe length by more than 5m, 50g of R-407C refrigerant should be refilled per extension length of 1m.

- Model : ACH3600G, ACH4400G, CH36ZA, CH44ZA, CH36CA, CH44CA

**Indoor Unit**

**Outdoor Unit**

\*Allowable pipe length : Max. 50m  
 \*Allowable drop distance : Max. 25m



\*Amount of refilling per extension length of 1m;

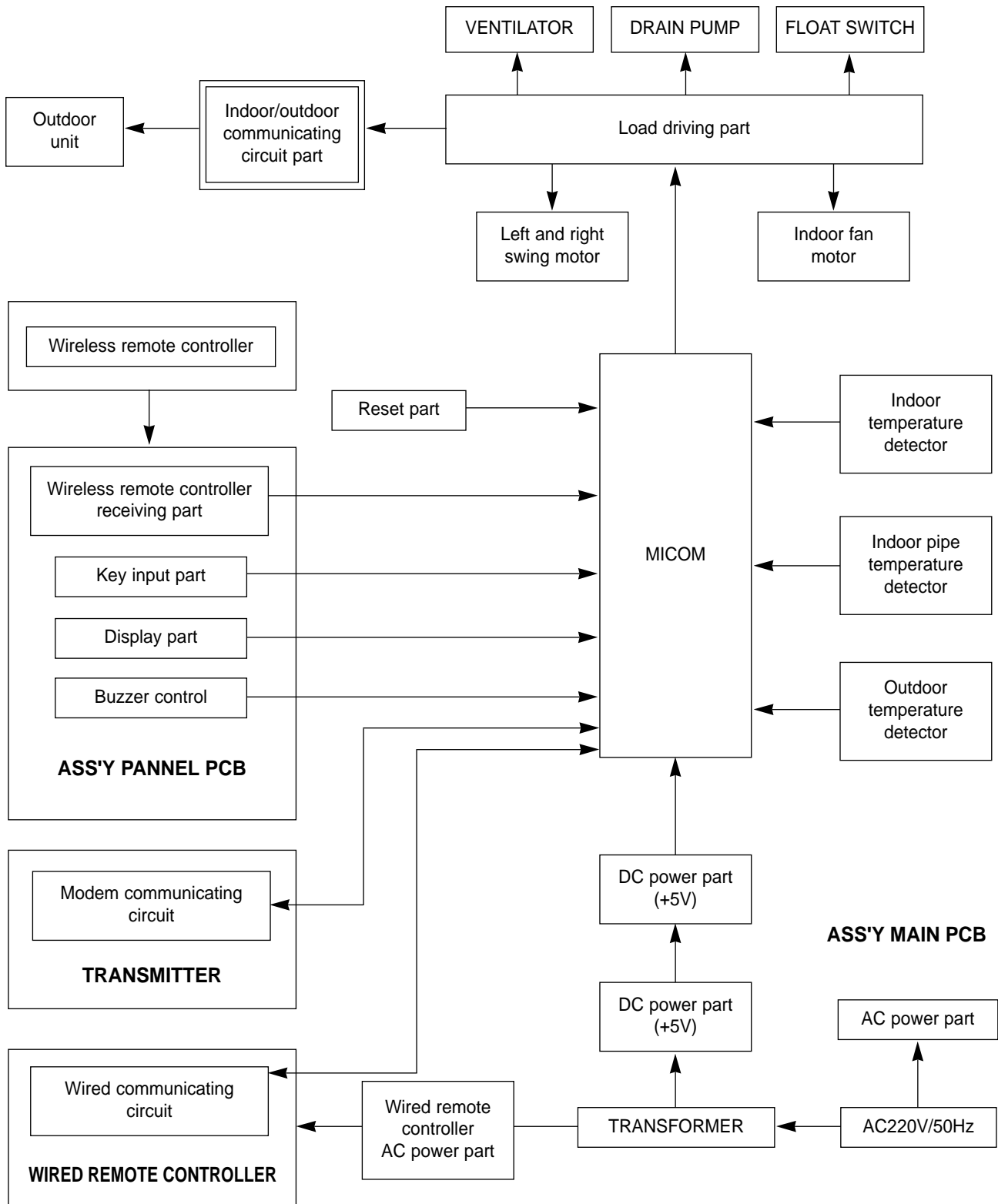
When extending the pipe length by more than 5m, 50gr(35gr: Outdoor Unit is higher than Indoor Unit) of R-22 refrigerant should be refilled per extension length of 1m. : ACH4400G, CH44ZA

When extending the pipe length by more than 5m, 60gr(45gr: Outdoor Unit is higher than Indoor Unit) of R-22 refrigerant should be refilled per extension length of 1m. : ACH3600G, CH36ZA

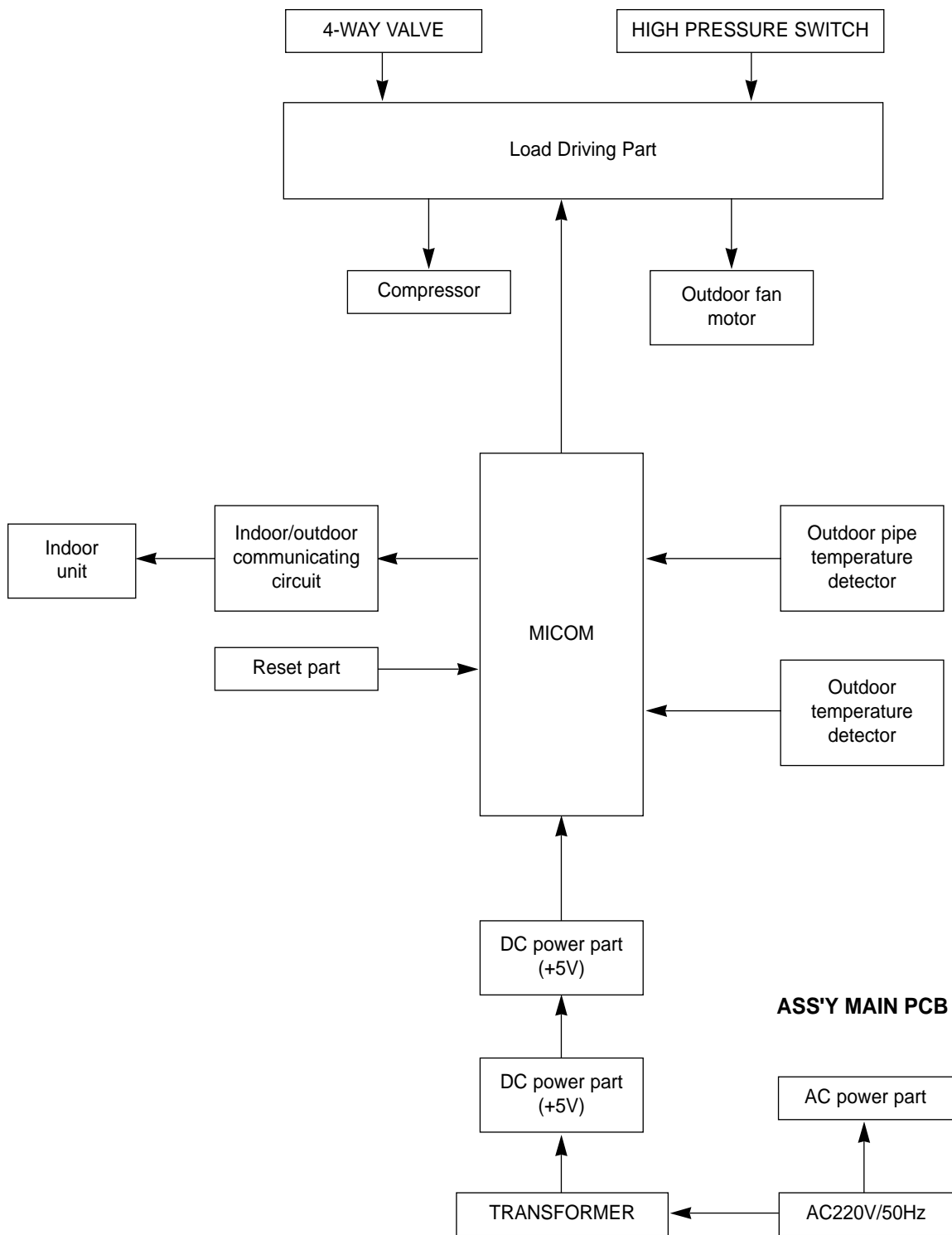
When extending the pipe length by more than 5m, 40gr(40gr: Outdoor Unit is higher than Indoor Unit) of R407C refrigerant should be refilled per extension length of 1m. : CH44CA

When extending the pipe length by more than 5m, 45gr(40gr: Outdoor Unit is higher than Indoor Unit) of R407C refrigerant should be refilled per extension length of 1m. : CH36CA

## 8-2 Micom control system configuration (indoor unit)



### 8-3 Micro Computer Block Diagram - Outdoor



## 8-4 THERMISTOR

THERMISTOR MODEL : 103AT			
THMPERATURE [°C]	THERMISTOR [Kohm]	THMPERATURE [°C]	THERMISTOR [Kohm]
70	2.229		
69	2.296	29	8.622
68	2.365	28	8.944
67	2.437	27	9.281
66	2.512	26	9.632
65	2.589	25	10
64	2.669	24	10.380
63	2.752	23	10.780
62	2.838	22	11.200
61	2.928	21	11.630
60	3.021	20	12.090
59	3.116	19	12.560
58	3.216	18	13.060
57	3.319	17	13.570
56	3.426	16	14.120
55	3.537	15	14.680
54	3.652	14	15.280
53	3.772	13	15.900
52	3.897	12	16.550
51	4.026	11	17.240
50	4.161	10	17.960
49	4.300	9	18.700
48	4.444	8	19.480
47	4.594	7	20.290
46	4.749	6	21.150
45	4.912	5	22.050
44	5.080	4	22.990
43	5.256	3	23.990
42	5.439	2	25.030
41	5.630	1	26.130
40	5.828	0	27.280
39	6.033	-1	28.470
38	6.246	-2	29.720
37	6.468	-3	31.040
36	6.699	-4	32.430
35	6.941	-5	33.890
34	7.192	-6	35.430
33	7.455	-7	37.050
32	7.729	-8	38.760
31	8.015	-9	40.560
30	8.313		

# MEMO