

1. Product Specifications

1-1 Table

MODEL	INDOOR UNIT		HH105EZM	HH128EZM	HH140EZM	HH175EZM	HH175ECM	
	OUTDOOR UNIT		UH105GZM	UH128GZM	UH140GZM	UH175GZM	UH175GCM	
Capacity	Cooling	Btu/h	34,000	43,700	47,800	54,600	56,300	
		W	10,000	12,800	14,000	16,000	16,500	
	Heating	Btu/h	38,200	47,800	54,600	61,400	64,800	
		W	11,200	14,000	16,000	18,000	19,000	
Power Supply			3ø, 380-415V~, 50Hz					
Power Input	Cooling	kW	3.45	4.45	5.12	5.7	6.9	
	Heating	kW	3.0	5.25	5.97	5.6	6.9	
Running Current	Cooling	A	6.1	7.9	10.6	9.6	12.2	
	Heating	A	5.35	9.3	12.1	9.4	12.2	
Indoor Unit	Fan Speed (at 0mmAq)	H.H	r.p.m	1,000	1,050	1,050	1,000	1,000
		Hi	r.p.m	860	1,000	1,000	900	900
		Med	r.p.m	760	950	950	800	800
		Low	r.p.m	660	900	900	700	700
	Air Circulation (at 14mmAq)	H.H	m³/min	35	36	36	45	45
		Hi	m³/min	29	34	34	39	39
		Med	m³/min	23	32	32	33	33
		Low	m³/min	20	30	30	30	30
	Noise Level (Sound Pressure)	Hi	dB(A)	48	49	49	51	51
		Med	dB(A)	47	48	48	49	49
		Low	dB(A)	46	47	47	48	48
	Heat Exchanger	Type		Wave fin coil				
		Row x Stages x Fin Pitch		3 x 14 x 1.7(900mm)				
	Fan	Type		Sirocco				
		Motor Output	W	-	211	211	-	-
	Dimensions	H	mm	390	390	390	390	390
W		mm	1,110	1,110	1,110	1,400	1,400	
D		mm	650	650	650	650	650	
Weight	kg	Net / Gross	66 / 77	66 / 77	66 / 77	75 / 88	75 / 88	
Outdoor Unit	Fan Speed	Hi	r.p.m.	900	900	900	900	930
		Low	r.p.m.	500	500	450	500	450
	Air Circulation (Hi)		m³/min	-	-	90	90	90
	Sound Pressure Level		dB(A)	65	65	65	65	67
	Fan	Type		Propeller				
		Motor Output	W	-	114	114	114	114
Compressor	Type		Scroll					
	Model		ZR45KC-TFD	ZR61KC-TFD	ZR61KC-TFD	ZR72KC-TFD	ZR81KCE-TFD	

Table(cont.)

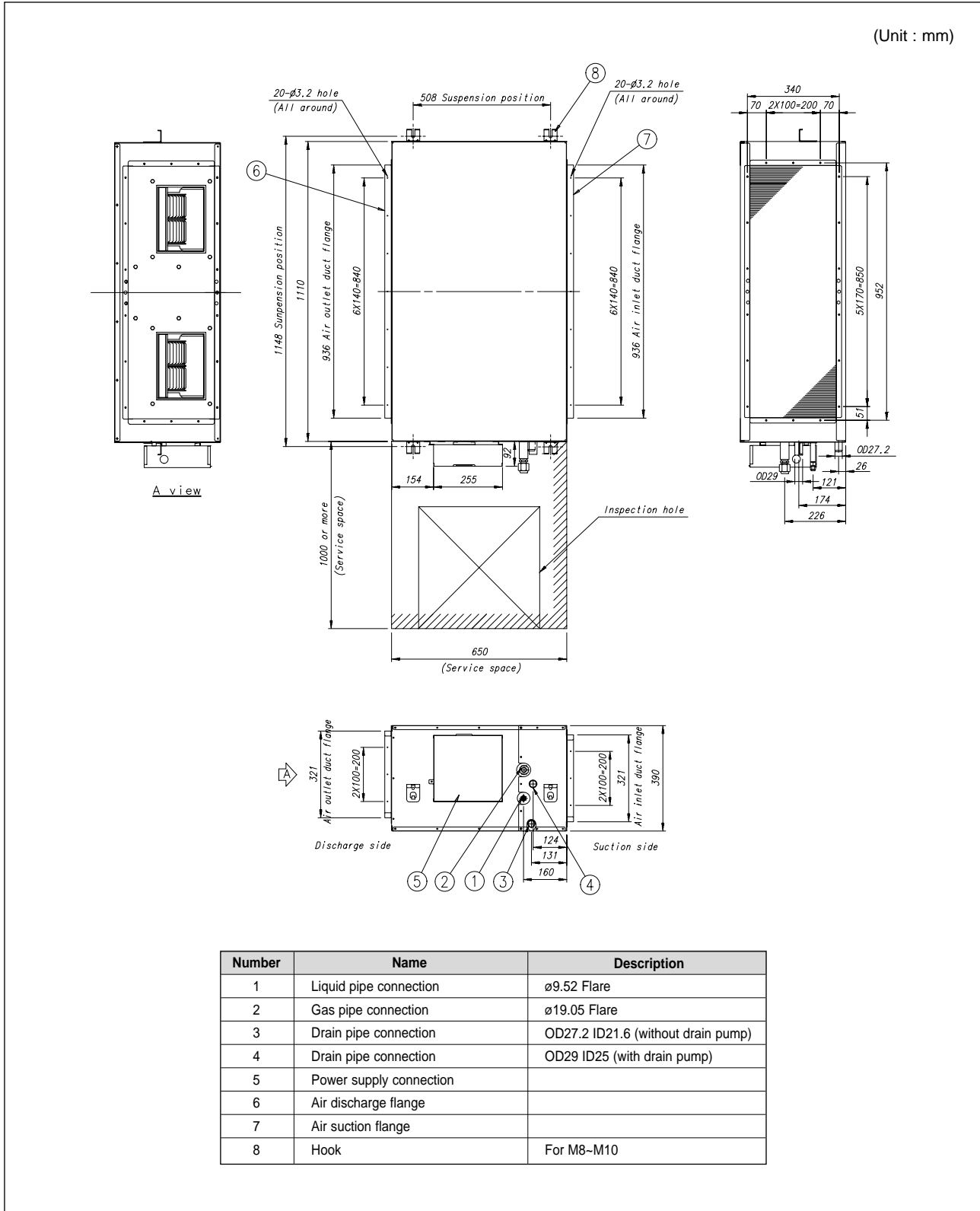
MODEL	INDOOR UNIT			HH105EZM	HH128EZM	HH140EZM	HH175EZM	HH175ECM
	OUTDOOR UNIT			UH105GZM	UH128GZM	UH140GZM	UH175GZM	UH175GCM
Outdoor Unit	Compressor	Capacity	kW	11.1	14.6	14.6	17.7	19.7
		Protection		Internal				
	Heat Exchanger	Type		Wave fin coil				
		Row x Stages x Fin Pitch		2 x 48 x 1.7(935 / 915)				
		Face Area	m ²	0.756	1.122	1.122	1.122	1.122
Condition	Refrigerant	Control		Electrical expansion valve				
		(R22)Charge	g	2,200	4,300	4,300	3,750	3,850
	Dimensions	(H x W x D)	mm	968 x 880 x 320	1,270 x 930 x 385			
	Weight	kg	Net / Gross	85 / 90	130 / 140	130 / 140	136 / 146	136 / 146
	Indoor Unit	Cool(DB/WB)	°C	27 / 19				
		Heat(DB/WB)	°C	20 / 15				
	Outdoor Unit	Cool(DB/WB)	°C	35 / 24				
		Heat(DB/WB)	°C	7 / 6				
Piping	Pipe O.D.	Liquid	mm(inch)	9.52(3/8")				
	Size	Gas	mm(inch)	19.05(3/4")				
	Connection Method			Flare				
	Between	Height	m	Max. 30				
		Pipe Length	m	Max. 50				

Notice : This model is tested under the external static pressure of 14mmAq.

1-2 Dimensions

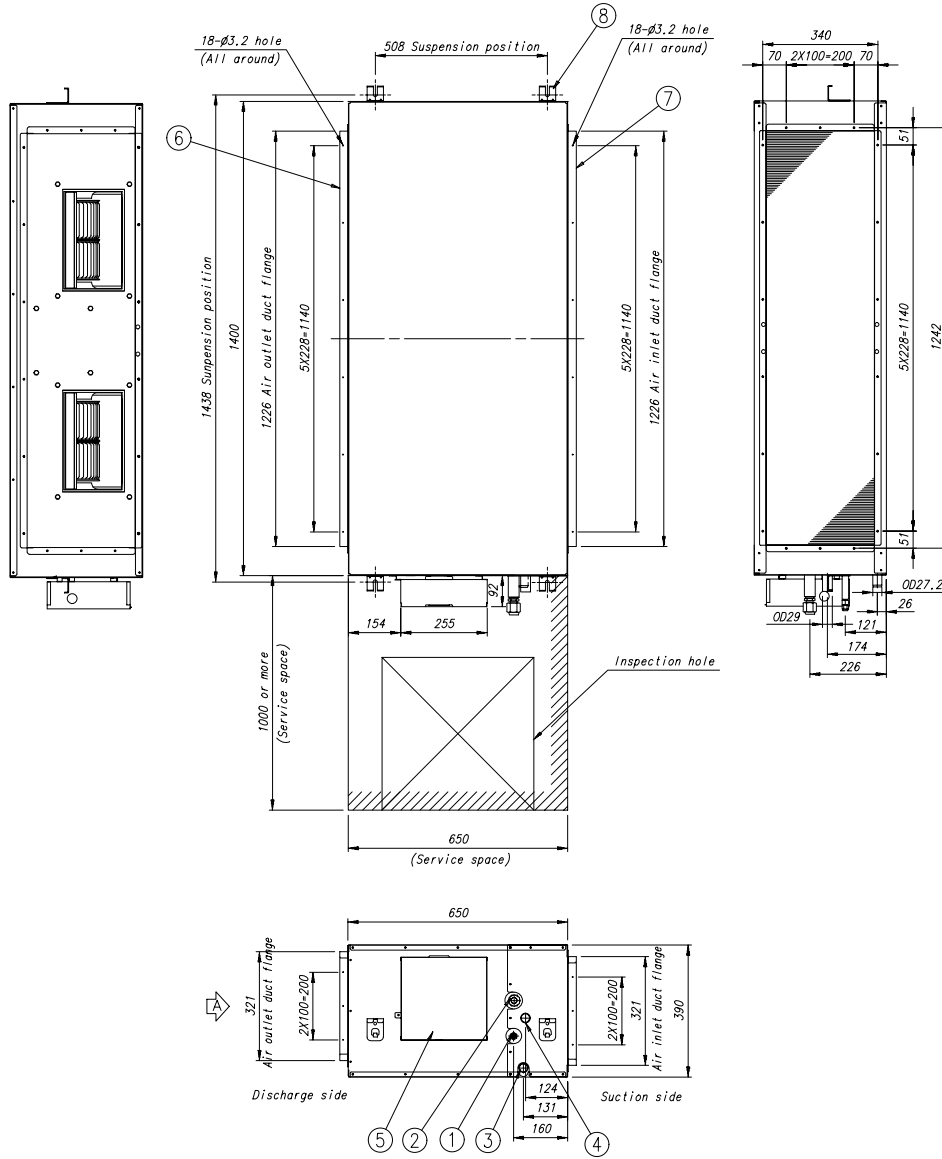
1-2-1 Indoor Unit

■ HH105EZM / HH128EZM / HH140EZM



■ HH175EZM/HH175ECM

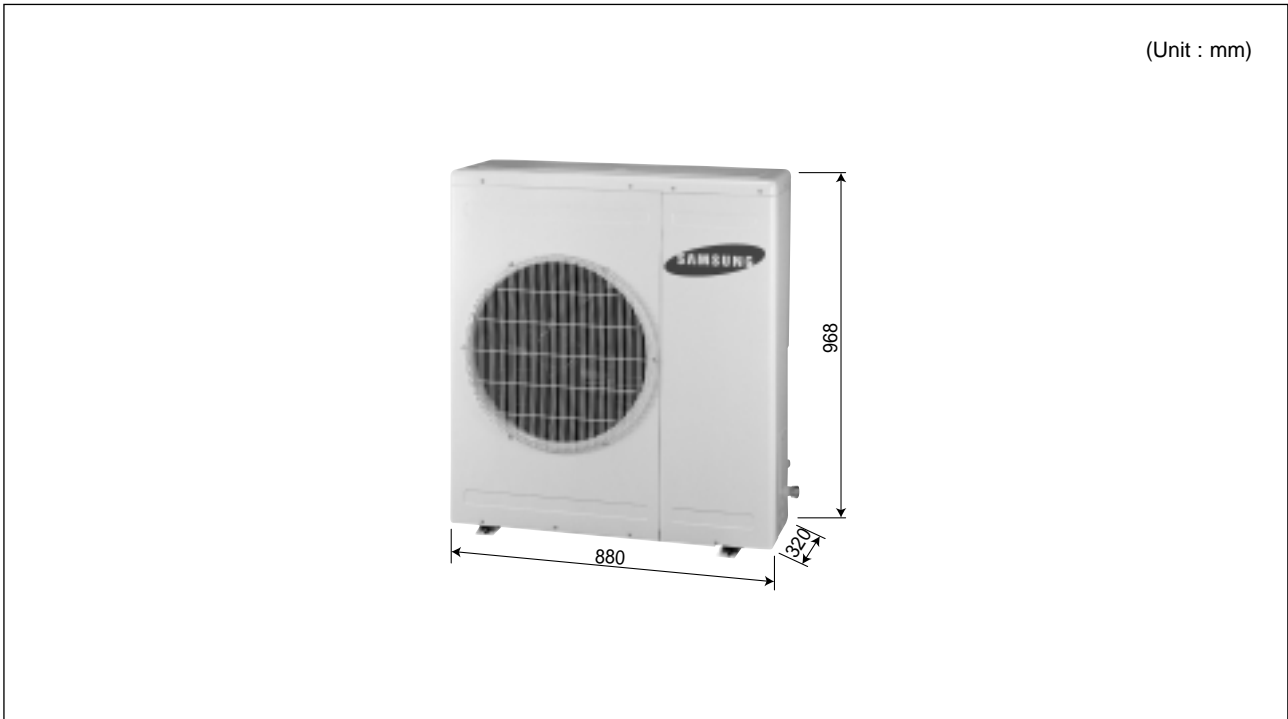
(Unit : mm)



Number	Name	Description
1	Liquid pipe connection	ø9.52 Flare
2	Gas pipe connection	ø19.05 Flare
3	Drain pipe connection	OD27.2 ID21.6 (without drain pump)
4	Drain pipe connection	OD29 ID25 (with drain pump)
5	Power supply connection	
6	Air discharge flange	
7	Air suction flange	
8	Hook	For M8-M10

1-2-2 Outdoor Unit

■ UH105GZM



■ UH128GZM / UH140GZM / UH175GZM / UH175GCM

